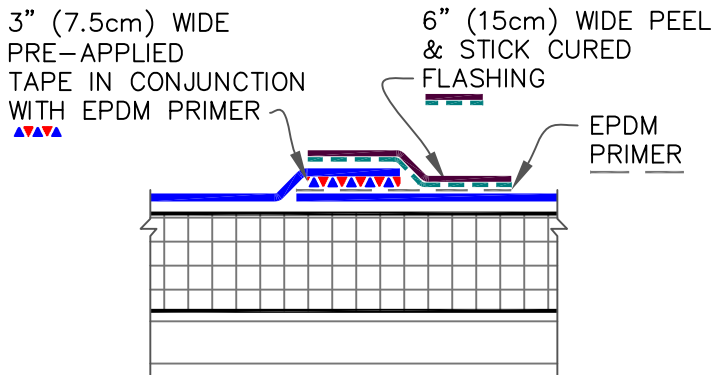
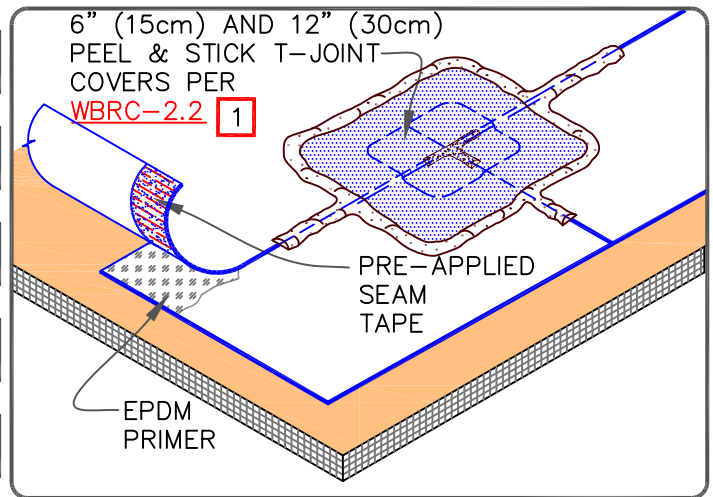
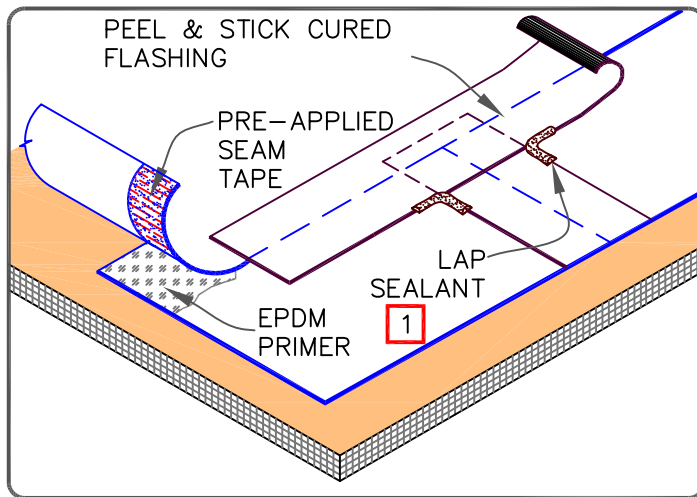
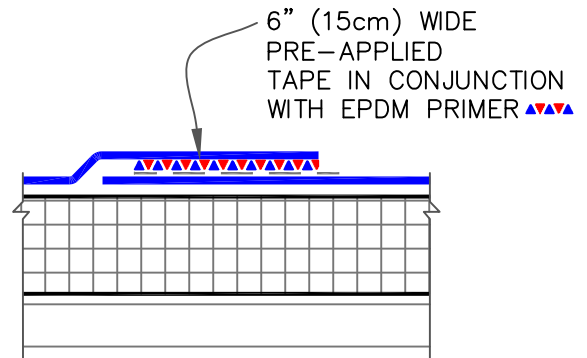


OPTION 1



OPTION 2



PRE-APPLIED SEAM TAPE

NOTES:

1. APPLY LAP SEALANT AT ALL INTERSECTIONS BETWEEN PEEL & STICK OVERLAYMENT STRIP.
2. REFER TO DETAIL [WBRMA-2.1](#) FOR MECHANICALLY-FASTENED SPLICES.

NOTE:

1. APPLY LAP SEALANT ALONG THE EXPOSED EDGE OF THE MEMBRANE SPLICE COVERING THE EXPOSED SPLICE TAPE 1/2" (1.5cm) IN EACH DIRECTION FROM THE SPLICE INTERSECTION AND OVERLAY WITH A 6" (15cm) T-JOINT COVER. INSTALL A 12" (30cm) T-JOINT COVER CENTERED OVER THE FIRST T-JOINT COVER PER DETAIL [WBRC-2.2](#).



EPDM MEMBRANE SPLICES- PROJECTS WITH 90-MIL MEMBRANE

