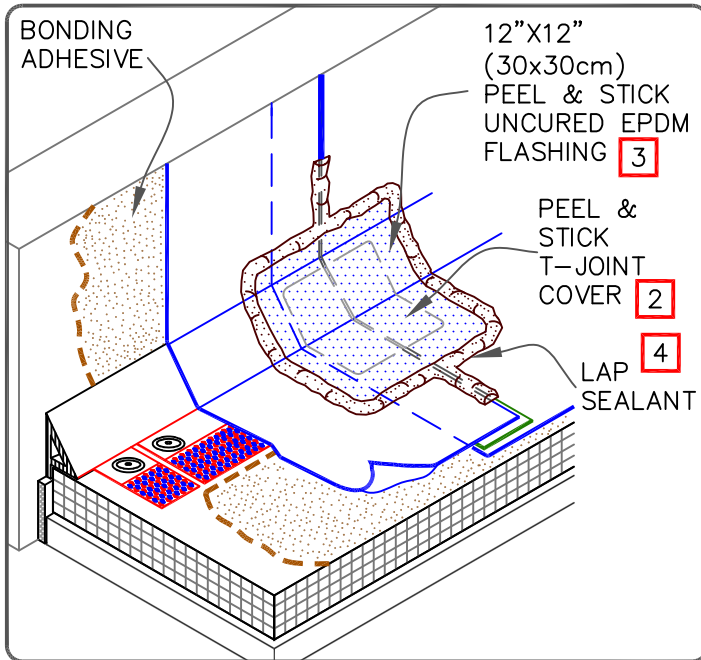
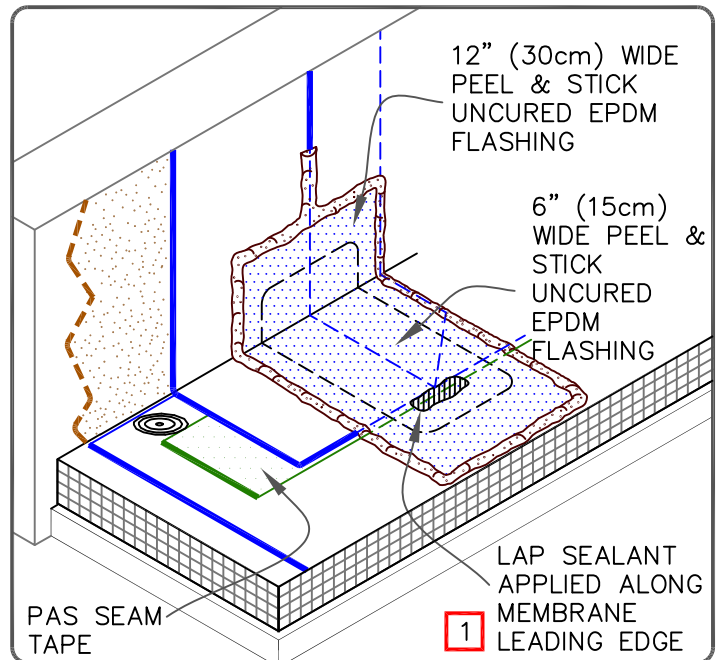


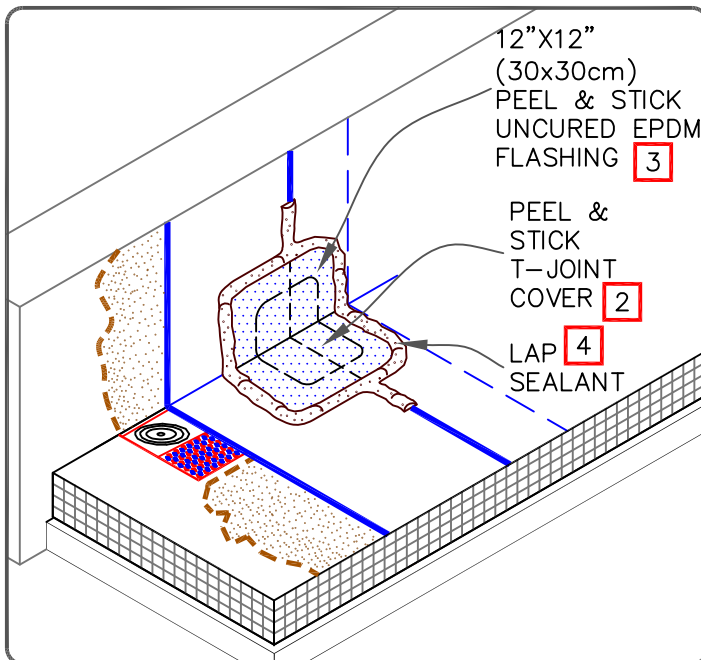
CONTINUOUS WALL FLASHING



SEPARATE WALL FLASHING



CONTINUOUS WALL FLASHING



NOTES:

1. APPLY LAP SEALANT ALONG THE LEADING EDGE OF THE MEMBRANE SPLICE (UNDER THE PEEL & STICK UNCURED EPDM FLASHING) COVERING THE EXPOSED SPLICE TAPE APPROXIMATELY 1/2" (1.5cm) BEYOND THE SPLICE EDGE.
2. PEEL & STICK T-JOINT COVER OR 6" (15cm) WIDE PEEL & STICK FLASHING, IN CONJUNCTION WITH EPDM PRIMER, MUST BE CENTERED OVER FIELD SPLICES AT THE ANGLE CHANGE.
3. PROJECTS USING 90-MIL MEMBRANE REQUIRE FIELD SPLICES TO BE OVERLAID WITH TWO LAYERS OF PEEL & STICK UNCURED EPDM FLASHING. THE BOTTOM LAYER SHALL BE 6" (15cm) WIDE COVERED WITH A 12" (30cm) WIDE TOP LAYER. BOTH LAYERS SHALL BE CENTERED.
4. SEAL EXPOSED LAYER WITH LAP SEALANT.



EPDM MEMBRANE SPLICES AT ANGLE CHANGE

- EPDM MEMBRANE
- APPROVED SUBSTRATE
- SEE NOTE

EPDM ROOFING SYSTEM

WBRC-2.3