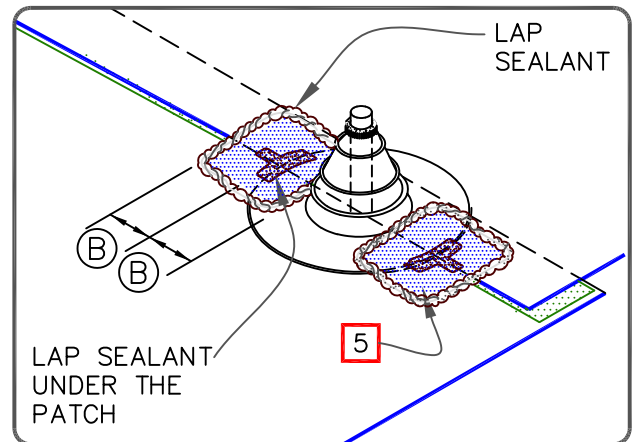


NOTES:

1. REMOVE ALL LEAD AND OTHER FLASHING BEFORE INSTALLING PEEL & STICK PIPE SEAL.
2. TEMPERATURE OF PIPE PENETRATION MUST NOT EXCEED 180°F (82°C).
3. PRE-MOLDED PIPE FLASHING MUST HAVE INTACT RIB AT THE TOP EDGE REGARDLESS OF PIPE DIAMETER.
4. DECK FLANGES OF THE PEEL & STICK PIPE SEAL SHALL NOT BE OVERLAPPED, CUT OR APPLIED OVER ANY ANGLE CHANGE.
5. ON MECHANICALLY-FASTENED ROOFING SYSTEMS, ADDITIONAL MEMBRANE SECUREMENT IS REQUIRED. REFER TO [DETAIL WBRMA-8.1.](#)

DIMENSIONS		cm	
(A)	1/2"	1.5	TO
	6"	15	
(B)	3"	7.5	



PRE-MOLDED PEEL & STICK PIPE SEAL

—• EPDM MEMBRANE
 APPROVED SUBSTRATE
0 SEE NOTE

EPDM ROOFING SYSTEM

WBRC-8.1A