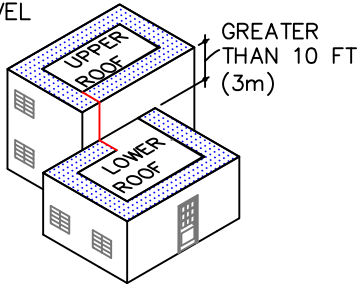


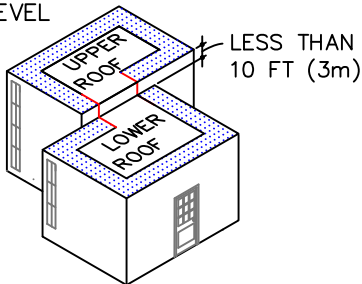
GUIDELINES FOR ROOF PERIMETER ZONES FOR MECHANICALLY ATTACHED ROOF SYSTEM

 PERIMETER ZONES

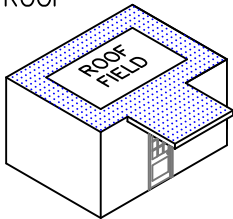
SPLIT LEVEL ROOFS



SPLIT LEVEL ROOFS

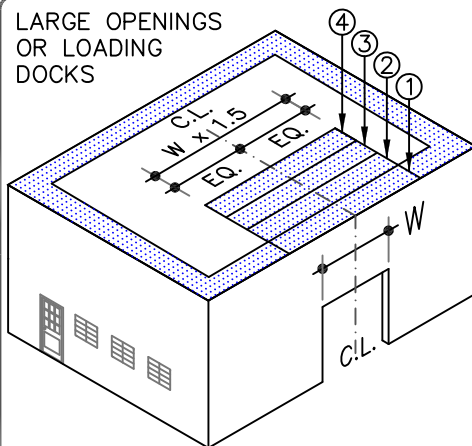


CANOPY ROOF

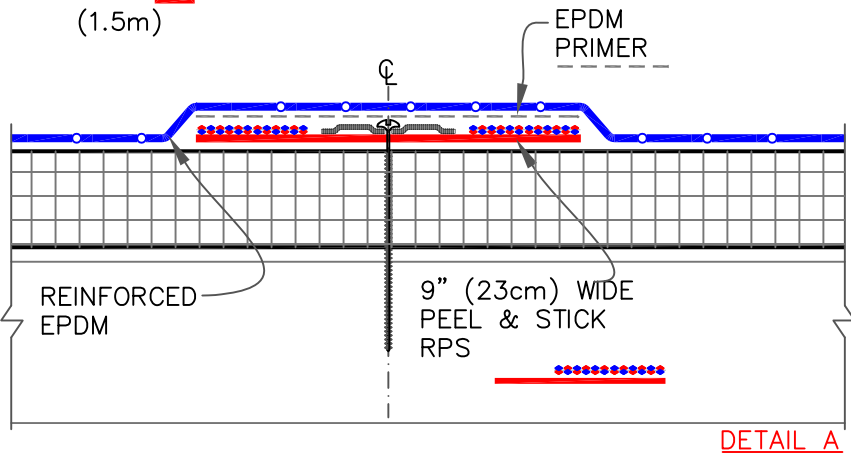
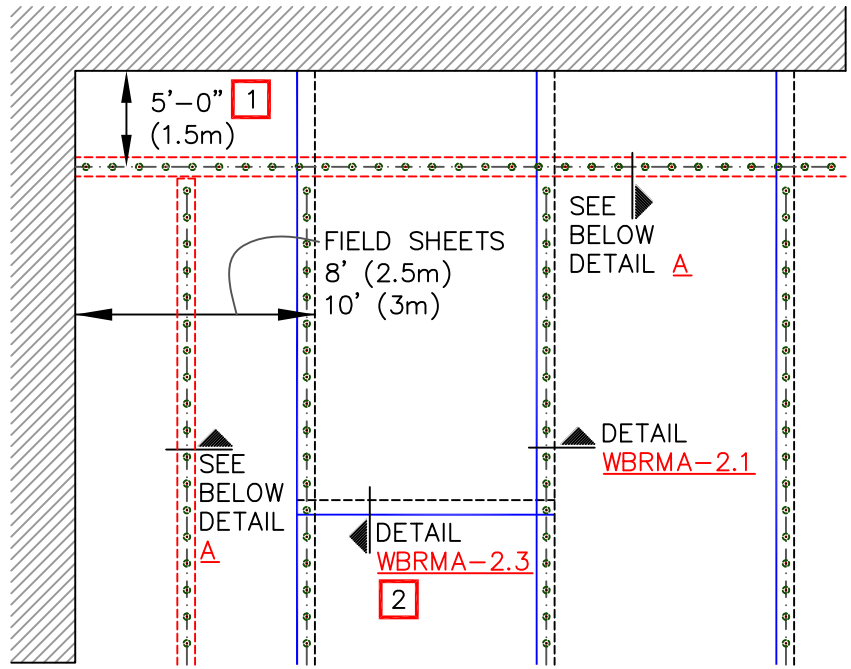


INSTALL PERIMETER SHEETS OVER THE ENTIRE OVERHANG (PROJECTION ROOF) AREA, EXTENDING ONTO THE MAIN ROOF DECK WHEN AT THE SAME LEVEL AS SHOWN.

LARGE OPENINGS OR LOADING DOCKS



4 PERIMETER SHEETS CENTERED OVER LARGE OPENINGS



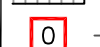


NOTES:

1. REFER TO WEATHERBOND SPECIFICATIONS FOR REQUIRED NUMBER OF PERIMETER SHEETS, SHEET WIDTH AND MEMBRANE FASTENING DENSITY.
2. END LAPS DO NOT REQUIRE MECHANICAL FASTENING AND SHALL BE SPLICED USING EITHER 3" (7.5cm) OR 6" (15cm) WIDE PAS SEAM TAPE. REFER TO DETAIL [WBRMA-2.3](#).
3. EPDM PRIMER MUST BE APPLIED TO THE BACK SIDE OF MEMBRANE SURFACE PRIOR TO ADHERING MEMBRANE TO PEEL & STICK RPS.
4. HPW FASTENERS AND POLYMER SEAM PLATES ARE REQUIRED OVER STEEL DECKS.



MEMBRANE SECUREMENT WITH PEEL & STICK RPS — OPTION 2

-  REINFORCED EPDM—UNLESS NOTED OTHERWISE
-  APPROVED SUBSTRATE
-  SEE NOTE

MECHANICALLY ATTACHED EPDM

WBRMA-2.0B