



Product Reference **Guide**



Single-Ply Simplified

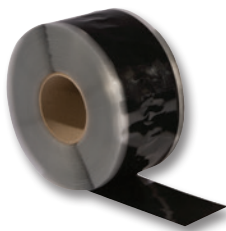


Contents

2	EPDM Accessories
4	TPO and PVC Accessories
9	Fasteners and Plates
10	Adhesives and Sealants
17	Air & Vapor Barriers
18	Insulation Reference
22	EPDM Packaging Guide
24	EPDM Reference
26	TPO and PVC Reference

EPDM Accessories

Peel & Stick Seam Tape



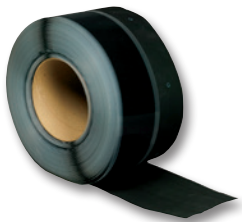
Fully cured synthetic rubber product used for splicing cured EPDM membrane in ballasted, adhered, and mechanically attached roofing systems.

Sizes Available:

3" x 100' – Product Number: 309501 – Black
3" x 100' – Product Number: 309817 – White
3" x 25' – Product Number: 310364 – Black
6" x 100' – Product Number: 326176 – Black

Quantity Per Box: 4 rolls (3" x 100'), 8 rolls (3" x 25'), and 2 rolls (6" x 100')

Peel & Stick Reinforced Perimeter Strip (RPS)



Reinforced Perimeter Strip (RPS) combines reinforced EPDM with 3"-wide Peel & Stick tape for additional membrane securement. A 9" version with 3"-wide Peel & Stick tape on both sides permits securement of perimeter sheeting on mechanically attached systems.

Sizes Available:

6" x 100' RPS – Product Number: 309505 – Black
6" x 100' RPS – Product Number: 309818 – White
Use with all EPDM Systems
9" x 100' RTS – Product Number: 301945
Use with Mechanically Attached EPDM Systems

Quantity Per Box: 2 rolls (6") and 1 roll (9")

20" Peel & Stick Cured Flashing



20" Peel & Stick Cured Flashing is pre-cut with PS Seam Tape and is the most efficient, labor-saving way to flash a curb. Production time on projects with numerous curbs or wall flashings can be reduced with this labor saving accessory.

Sizes Available:

20" x 50' – Product Number: 326491 – Black
20" x 50' – Product Number: 330913 – White

Quantity Per Box: 1 roll

Peel & Stick Curb Flashing



Cured EPDM membrane cut to 20" wide width with 6" PS Tape already applied. This product provides an efficient way to flash curbs and short walls.

Sizes Available:

20" x 50' – Product Number: 327532 – Black

Quantity Per Box: 1 roll

Peel & Stick Cured Coverstrip



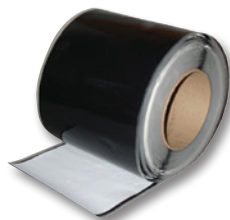
Cured EPDM membrane laminated to a synthetic rubber adhesive makes this product the optimal solution to overlay seam fastening plates, strip in seams and metal edgings, or make roof repairs.

Sizes Available:

6" x 50' – Product Number: 310381 – Black
6" x 100' – Product Number: 309502 – Black
6" x 100' – Product Number: 309813 – White
9" x 100' – Product Number: 309609 – Black
9" x 100' – Product Number: 309814 – White
12" x 50' – Product Number: 317597 – Black
12" x 50' – Product Number: 317599 – White

Quantity Per Box: 3 rolls (6" x 50'), 2 rolls (6" x 100'), 1 roll (9" and 12")

Peel & Stick Uncured EPDM Flashing



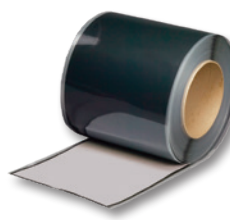
Uncured EPDM laminated to a synthetic rubber adhesive. PS Flashing can be used to flash corners, pipes and other penetrations.

Sizes Available:

6" x 100' – Product Number: 309503 – Black
6" x 100' – Product Number: 310434 – White
9" x 25' – Product Number: 310461 – Black
9" x 50' – Product Number: 309950 – White
12" x 50' – Product Number: 309611 – Black
12" x 50' – Product Number: 309951 – White
12" x 50' – Product Number: 348768 – Gray

Quantity Per Box: 2 rolls (6"), 1 roll (9" and 12")

Peel & Stick Detail Flashing



Self curing and can be used to flash pipes, scuppers and other roof system structures and penetrations.

Sizes Available:

5" x 100' – Product Number: 322190 – Black
6" x 100' – Product Number: 327687 – Black

Quantity Per Box: 2 rolls (5" and 6")

EPDM Accessories

Peel & Stick Cured Cover Tape



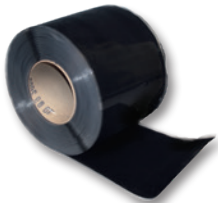
Ideal for stripping in seams and metal edgings or simply making repairs to cut membrane.

Sizes Available:

5" x 100' – Product Number: 322192 – Black

Quantity Per Box: 2 rolls

Peel & Stick Overlayment Strip



Semi-cured EPDM laminated to a synthetic rubber adhesive. It is designed for stripping in drip edges, all types of metal edging and WeatherBond seams, and all fastening plates

Sizes Available:

6" x 100' – Product Number: 332656 – Black

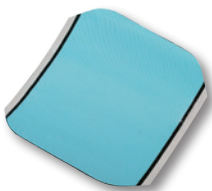
9" x 100' – Product Number: 332657 – Black

12" x 50' – Product Number: 305722 – Black

Quantity Per Box:

2 rolls (6"), 1 roll (9"), 1 roll (12")

Peel & Stick Inside/Outside Corners



Uncured EPDM laminated to a synthetic rubber adhesive. The pre-cut corners greatly reduce installation time and can be used for inside and outside corner installations.

Sizes Available:

7" x 9" – Product Number: 303325 – Black

7" x 9" – Product Number: 310310 – White

Quantity Per Box: 20

Peel & Stick Pipe Seals



Cured EPDM with a synthetic rubber adhesive. PS Pipe Seals increase the speed and ease of installation.

Sizes Available:

1" – 6" – Product Number: 309991 – Black

1" – 6" – Product Number: 317066 – White

Quantity Per Box: 10

Pipe Supports



An extruded EPDM product used to support steel pipe, electrical conduit, PVC pipe, and copper tubing on WeatherBond's EPDM, TPO, and PVC roofing systems.

Sizes Available:

Mini: ½" – 1 ½" – Product Number: 309403

Small: ¾" – 2" – Product Number: 309402

Large: 2 ½" – 5" – Product Number: 309404

Quantity Per Box: 20 (Mini and Small), 10 (Large)

Peel & Stick T-Joint Covers



Uncured EPDM laminated to a synthetic rubber adhesive. Used to seal field splice intersections and horizontal-to-vertical transitions of field splices.

Sizes Available:

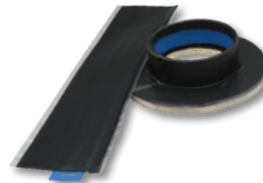
6" x 6" – Product Number: 304029 – Black

6" x 6" – Product Number: 332871 – White

12" x 12" – Product Number: 305089 – Black

Quantity Per Box: 20

Peel & Stick Pourable Sealer Pockets



Uncured EPDM Flashing with a synthetic rubber adhesive and a 2" support strip pre-applied to the flashing. Sizes can be combined to form larger pockets when required.

Sizes Available:

4" dia. – Product Number: 303322 – Black

6" dia. – Product Number: 303323 – Black

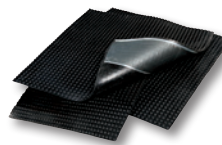
6" dia. – Product Number: 316243 – White

8" dia. – Product Number: 303324 – Black

8" dia. – Product Number: 332890 – White

Quantity Per Box: 12

Peel & Stick Walkway Pads



Cured EPDM with a synthetic rubber adhesive.

Peel & Stick Walkway Pads are designed to protect the WeatherBond EPDM membrane in areas exposed to repetitive foot traffic.

Sizes Available:

30" x 30" – Product Number: 300829 – Black

30" x 30" – Product Number: 309589 – White

Quantity Per Pallet: 50

TPO and PVC Accessories

Reinforced Flashing



Pre-slit reinforced membrane used to overlay fasteners, plates, and end laps on WeatherBond Fleece membrane.

TPO

Sizes Available:

45-mil

6" x 100' – Product Number: 300485 – White

6" x 100' – Product Number: 300486 – Gray

6" x 100' – Product Number: 302811 – Tan

60-mil

6" x 100' – Product Number: 325005 – White

6" x 100' – Product Number: 325003 – Gray

6" x 100' – Product Number: 325004 – Tan

9" x 50' – Product Number: 310419 – White

9" x 50' – Product Number: 310417 – Gray

9" x 50' – Product Number: 310418 – Tan

80-mil

9" x 50' – Product Number: 318404 – White

Quantity Per Box: 3 rolls (6"), 2 rolls (9")

Non-Reinforced Flashing



Non-reinforced thermoplastic membrane used to field-fabricate pipe flashings and scuppers when the use of a pre-molded accessory is not feasible.

TPO

Sizes Available:

60-mil

12" x 50' – Product Number: 300473 – White

12" x 50' – Product Number: 300479 – Gray

12" x 50' – Product Number: 300476 – Tan

24" x 50' – Product Number: 300474 – White

24" x 50' – Product Number: 300480 – Gray

24" x 50' – Product Number: 300477 – Tan

24" x 50' – Product Number: 332963 – Medium Bronze

24" x 50' – Product Number: 328050 – Patina Green

24" x 50' – Product Number: 328056 – Rock Brown

24" x 50' – Product Number: 328053 – Slate Gray

24" x 50' – Product Number: 328047 – Terra Cotta

Quantity Per Box: 1 roll

PVC

Sizes Available:

60-mil

12" x 50' – Product Number: 327840 – White/Gray

12" x 50' – Product Number: 327842 – White/Tan

24" x 50' – Product Number: 327841 – White/Gray

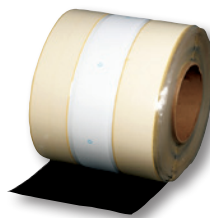
24" x 50' – Product Number: 327843 – White/Tan

24" x 50' – Product Number: 334437 – Lt Gray

24" x 50' – Product Number: 335821 – Slate Gray

Quantity Per Box: 1 roll

TPO Pressure-Sensitive RUSS



10" RUSS (shown) is used in place of narrow-width sheets to secure membrane in the perimeter of the roof on mechanically attached systems. 6" RUSS is also available and is used to secure membrane at the base of vertical walls for additional membrane securement without penetrating the sheet.

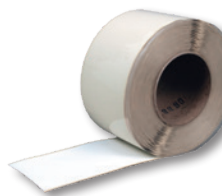
Sizes Available:

6" x 100' – Product Number: 303373

10" x 100' – Product Number: 305442

Quantity Per Box: 1 roll (10"), 2 rolls (6")

TPO Pressure-Sensitive Coverstrip



Non-reinforced TPO laminated to pressure-sensitive tape used for stripping in flat metal flanges such as shop-bent drip edge.

Sizes Available:

6" x 100' – Product Number: 303102 – White

6" x 100' – Product Number: 303103 – Gray

6" x 100' – Product Number: 303104 – Tan

Quantity Per Box: 2 rolls

PVC Pressure Sensitive Cover Strip



Non-reinforced KEE HP flashing laminated to a nominal 35-mil, fully cured, pressure-sensitive, synthetic rubber for use on PVC/KEE HP membrane utilizing Step 1 Activator and Step 2 Primer for installation.

Sizes Available:

6" x 100' – Product Number: 332616 – White

6" x 100' – Product Number: 332617 – Gray

6" x 100' – Product Number: 332618 – Tan

Yellow PS Warning Strip



Non-reinforced yellow PS coverstrip can be used on TPO, EPDM, or PVC with the corresponding membrane primer (and activator for PVC) to indicate roof edges and other hazards.

Sizes Available:

6" x 100' – Product Number: 325721

Quantity Per Box: 2 rolls

TPO and PVC Accessories

Split Pipe Seals



Fabricated flashings made of detail membrane used for flashing pipes with an obstruction that prevents the use of a molded pipe seal. Additional sizes and colors available through special order.

TPO

Sizes Available:

1" – Product Number: 303504 – White
1" – Product Number: 307654 – Gray
1" – Product Number: 307648 – Tan
2" – Product Number: 303505 – White
2" – Product Number: 307655 – Gray
2" – Product Number: 307649 – Tan
3" – Product Number: 303506 – White
3" – Product Number: 307656 – Gray
3" – Product Number: 307650 – Tan
4" – Product Number: 303507 – White
4" – Product Number: 307657 – Gray
4" – Product Number: 307651 – Tan
5" – Product Number: 303508 – White
5" – Product Number: 307658 – Gray
5" – Product Number: 307652 – Tan
6" – Product Number: 303509 – White
6" – Product Number: 307659 – Gray
6" – Product Number: 307653 – Tan

Quantity Per Box: 8

PVC

Sizes Available:

1" – Product Number: 307724 – White
1" – Product Number: 307725 – Gray
1" – Product Number: 307726 – Tan
2" – Product Number: 307727 – White
2" – Product Number: 307728 – Gray
2" – Product Number: 307729 – Tan
3" – Product Number: 307730 – White
3" – Product Number: 307731 – Gray
3" – Product Number: 307732 – Tan
4" – Product Number: 307733 – White
4" – Product Number: 307734 – Gray
4" – Product Number: 307735 – Tan
5" – Product Number: 307736 – White
5" – Product Number: 307737 – Gray
5" – Product Number: 307738 – Tan
6" – Product Number: 307739 – White
6" – Product Number: 307740 – Gray
6" – Product Number: 307741 – Tan

Quantity Per Box: 8

Molded Pipe Seals



Injection-molded, pre-formed pipe flashings for pipes 3/4" to 8" diameter. Molded Pipe Seals provide a reliable method of waterproofing round pipe penetrations, as well as a substantial labor savings compared to field fabrication.

TPO

Sizes Available:

3/4" – 8" dia. – Product Number: 316534 – White
3/4" – 8" dia. – Product Number: 316535 – Gray
3/4" – 8" dia. – Product Number: 316536 – Tan

Quantity Per Box: 8

PVC

Sizes Available:

3/4" – 8" dia. – Product Number: 316537 – White
3/4" – 8" dia. – Product Number: 322959 – Gray
3/4" – 8" dia. – Product Number: 323823 – Tan
3/4" – 8" dia. – Product Number: 348093 – Light Gray

Quantity Per Box: 8

Reinforced Coverstrip



WeatherBond's Reinforced Coverstrip is an 8" (20.3 cm)-wide, nominal 80-mil (2.03 mm)-thick flashing that contains a polyester reinforcing fabric. Reinforced Coverstrip is used for stripping in rows of fasteners and plates, stripping in coated edge metal, and covering the butt joints of WeatherBond Fleece, PVC and KEE HP membranes.

PVC

Sizes Available:

60-mil

8" x 100' – Product Number: 348090 – White

80-mil

8" x 75' – Product Number: 325168 – White
8" x 75' – Product Number: 325169 – Gray
8" x 75' – Product Number: 326121 – Tan

Quantity Per Box: 1 roll

KEE HP

Sizes Available:

60-mil

8" x 100' – Product Number: 325981 – White

Quantity Per Box: 2 rolls

80-mil

8" x 75' – Product Number: 325165 – White
8" x 75' – Product Number: 325167 – Gray
8" x 75' – Product Number: 326120 – Tan

Quantity Per Box: 1 roll



Square Tubing Wraps



Fabricated using detail membrane and designed to flash square metal tubing. A split and overlap tab are incorporated into these parts to allow the flashings to be opened and wrapped around a square penetration with an obstruction. Additional sizes and colors available through special order.

TPO

Sizes Available:

3" x 3" – Product Number: 305576 – White
3" x 3" – Product Number: 307664 – Gray
3" x 3" – Product Number: 307660 – Tan
4" x 4" – Product Number: 305577 – White
4" x 4" – Product Number: 307665 – Gray
4" x 4" – Product Number: 307661 – Tan
5" x 5" – Product Number: 305578 – White
5" x 5" – Product Number: 307666 – Gray
5" x 5" – Product Number: 307662 – Tan
6" x 6" – Product Number: 305579 – White
6" x 6" – Product Number: 307667 – Gray
6" x 6" – Product Number: 307663 – Tan

Quantity Per Box: 8

PVC

Sizes Available:

3" x 3" – Product Number: 307742 – White
4" x 4" – Product Number: 307745 – White
6" x 6" – Product Number: 307748 – White
3" x 3" – Product Number: 307743 – Gray
4" x 4" – Product Number: 307746 – Gray
6" x 6" – Product Number: 307749 – Gray
3" x 3" – Product Number: 307744 – Tan
4" x 4" – Product Number: 307747 – Tan
6" x 6" – Product Number: 307750 – Tan

Quantity Per Box: 8

TPO and PVC Accessories

Curb Wrap Corners



Fabricated flashings made of detail membrane designed to reduce curb flashing time. Each corner has a 6"-wide base flange and a 12" overall height. One curb will require 4 corners. Other sizes and colors available through special orders. Can also be ordered in 1- or 2-piece wraps.

TPO

Sizes Available:

305062 TPO 7" Prefab Curb Corner – White
305063 TPO 13" Prefab Curb Corner – White
305064 TPO 19" Prefab Curb Corner – White
307668 TPO 7" Prefab Curb Corner – Tan
307669 TPO 13" Prefab Curb Corner – Tan
307670 TPO 19" Prefab Curb Corner – Tan
307671 TPO 25" Prefab Curb Corner – Tan
307672 TPO 31" Prefab Curb Corner – Tan
307673 TPO 37" Prefab Curb Corner – Tan
307674 TPO 7" Prefab Curb Corner – Gray
307675 TPO 13" Prefab Curb Corner – Gray
307676 TPO 19" Prefab Curb Corner – Gray
307677 TPO 25" Prefab Curb Corner – Gray
307678 TPO 31" Prefab Curb Corner – Gray
307679 TPO 37" Prefab Curb Corner – Gray

Quantity Per Box: 12 pieces or 3 complete curbs

PVC

Sizes Available:

7" Wrap for 12" Curb:
Product Number: 322973 – White
Product Number: 322970 – Gray
Product Number: 322977 – Tan

13" Wrap for 24" Curb:
Product Number: 322975 – White
Product Number: 322971 – Gray
Product Number: 322978 – Tan

19" Wrap for 36" Curb:
Product Number: 322976 – White
Product Number: 322972 – Gray
Product Number: 322979 – Tan

Quantity Per Box: 12 pieces or 3 complete curbs

Universal Corners



Pre-molded corners, used for flashing outside or inside corners on new construction installations where right-angled conditions are more common. Installation is fast and easy with no stretching required.

TPO

Sizes Available:

One Size

Product Number: 318070 – White
Product Number: 327601 – Gray
Product Number: 327602 – Tan

Quantity Per Box: 20

PVC

Sizes Available:

One Size

Product Number: 318071 – White
Product Number: 329288 – Gray
Product Number: 329289 – Tan
Product Number: 348092 – Light Gray

Quantity Per Box: 20

Crossgrip Walkway



PVC and TPO Crossgrip Walkway is an open grid walkway used to protect the membranes from regular foot traffic and other hazards.

TPO

Sizes Available:

3' x 33' – Product Number: 332633 – White
3' x 33' – Product Number: 332634 – Gray
3' x 33' – Product Number: 341122 – Yellow

Packaged Individually

PVC

Sizes Available:

3' x 33' – Product Number: 332475 – White
3' x 33' – Product Number: 332474 – Gray
3' x 33' – Product Number: 340355 – Yellow

Packaged Individually

Rib Profile



This profile is extruded from the same weather-resistant TPO or PVC compound as the membrane. The Rib Profile is secured to the TPO or PVC roofing membrane to simulate a standing seam metal roofing system. The physical dimensional stability of the profile is enhanced with fiberglass and the rectangular profile provides exceptional shadow lines for aesthetic appeal.

TPO

Sizes Available:

10' – Product Number: 324574 – White
10' – Product Number: 324572 – Gray
10' – Product Number: 324573 – Tan
10' – Product Number: 333064 – Medium Bronze
10' – Product Number: 330830 – Rock Brown
10' – Product Number: 330797 – Terra Cotta
10' – Product Number: 330799 – Slate Gray
10' – Product Number: 330798 – Patina Green

Quantity Per Box: 20

PVC

Sizes Available:

10' – Product Number: 321909 – White
10' – Product Number: 321911 – Gray
10' – Product Number: 321910 – Tan
10' – Product Number: 334439 – Lt Gray
10' – Product Number: 335823 – Slate Gray

Quantity Per Box: 20

TPO and PVC Accessories

Inside/Outside Corners



Pre-molded and used for flashing inside and outside corners.

TPO

Sizes Available: One Size

Product Number: 300020 – Gray – Inside/Outside

Product Number: 300025 – Tan – Inside/Outside

Product Number: 300016 – White – Outside

Product Number: 307406 – White – Inside

Product Number: 307407 – Tan – Inside

Product Number: 307408 – Gray – Inside

Quantity Per Bag: 12

PVC

Sizes Available: One Size

Product Number: 329286 – White/Gray – Outside

Product Number: 329284 – White/Gray – Inside

Product Number: 329287 – White/Tan – Outside

Product Number: 329285 – White/Tan – Inside

Quantity Per Bag: 12

T-Joint Covers



Injection-molded non-reinforced flashings used to seal T-Joint splice intersections.

TPO

Sizes Available:

4½" dia. – Product Number: 307476 – White

4½" dia. – Product Number: 307478 – Gray

4½" dia. – Product Number: 307477 – Tan

Quantity Per Box: 100

PVC

Sizes Available:

4½" dia. – Product Number: 308224 – White

4½" dia. – Product Number: 309494 – Gray

4½" dia. – Product Number: 309847 – Tan

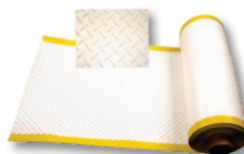
Quantity Per Box: 100

PVC Coated Metal



PVC Coated Metal is a galvanized steel sheet with a laminate of non-reinforced PVC flashing. WeatherBond PVC or KEE HP membrane may be welded directly to the coated metal, eliminating the need to strip in the metal with a separate piece of membrane.

Walkway Rolls



Heat-weldable walkway rolls designed to protect TPO membrane in areas exposed to repetitive foot traffic and other hazards.

TPO Walkway Rolls

Sizes Available:

34" x 50' – Product Number: 310508 – White

34" x 50' – Product Number: 310509 – Gray

34" x 50' – Product Number: 310510 – Tan

Packaged Individually

White EPDM Peel & Stick Walkway Pads

Also Available (Not shown)

Sizes Available:

30" x 30" – Product Number: 309589 – White

Quantity Per Pallet: 50

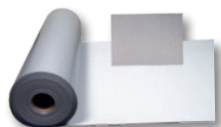
PVC Walkway Rolls

Also Available

Sizes Available:

3' x 60' – Product Number: 336712 – Gray

Packaged Individually



Molded Sealant Pockets



Interlocking, two-piece, injection-molded and weldable pockets used to waterproof pipe clusters or other oddly shaped penetrations.

TPO

Sizes Available:

6" wide x 2" high

Can be adjusted from 7½" to 11½" in length

Product Number: 316539 – White

Product Number: 316540 – Gray

Product Number: 316541 – Tan

Quantity Per Box: 5 complete pockets

PVC

Sizes Available:

6" wide x 2" high

Can be adjusted from 7½" to 11½" in length

Product Number: 316542 – White

Quantity Per Box: 5 complete pockets

Sizes Available: 10 Pcs/Pallet –

4' x 10' – Product Number: 307708 – White

4' x 10' – Product Number: 307709 – Gray

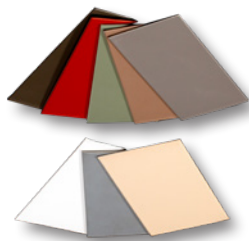
4' x 10' – Product Number: 307710 – Tan

4' x 10' – Product Number: 334438 – Lt. Gray

4' x 10' – Product Number 335822 – Slate Gray

TPO and PVC Accessories

TPO Coated Metal



24-gauge (0.6 mm) galvanized steel sheet that is coated with a layer of .035" non-reinforced flashing. TPO Membrane may be welded directly to the coated metal. The sheet is cut to the appropriate width and used to fabricate metal drip edges or other roof perimeter edging profiles.

Sizes Available:

5 Pcs/Pallet:

4' x 10' – Product Number: 332916 – Medium Bronze
4' x 10' – Product Number: 332912 – Patina Green
4' x 10' – Product Number: 332913 – Rock Brown
4' x 10' – Product Number: 332914 – Slate Gray
4' x 10' – Product Number: 332915 – Terra Cotta

10 Pcs/Pallet –

4' x 10' – Product Number: 309272 – White
4' x 10' – Product Number: 309273 – Gray
4' x 10' – Product Number: 309274 – Tan

25 Pcs/Pallet –

4' x 10' – Product Number: 303181 – White
4' x 10' – Product Number: 303183 – Gray
4' x 10' – Product Number: 303182 – Tan

One- and Two-Way Pressure Relief Vents



Engineered to reduce moisture within the roofing system and release trapped air pressure within the building. One-Way Vents allow trapped air pressure to escape; Two-Way Vents (combined with One-Way Vents) help to reduce moisture.

Sizes Available – Compatible with all Membrane Types (EPDM/TPO/PVC):

8" x 11" – Product Number: 327975 – One-Way Pressure Relief Vent
8" x 11" – Product Number: 327976 – Two-Way Pressure Relief Vent

Quantity Per Box: 25 Pcs

TPO

Sizes Available:

9" x 12" – Product Number: 334849 – TPO One-Way Vent
9" x 12" – Product Number: 334480 – TPO Two-Way Vent

Quantity Per Box: 4 Pcs

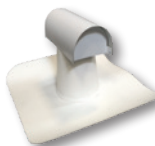
PVC

Sizes Available:

9" x 12" – Product Number: 335592 – PVC One-Way Vent
9" x 12" – Product Number: 335593 – PVC Two-Way Vent

Quantity Per Box: 4 Pcs

T-Top Vents



Available in TPO and PVC versions, T-Top Vents are designed to allow air to flow freely through the vent while preventing water from infiltrating the roofing system.

TPO

Sizes Available:

2 Pcs/Box – 4" – Product Number: 326896 – TPO T-Top Vent
2 Pcs/Box – 6" – Product Number: 326882 – TPO T-Top Vent
3 Pcs/Box – 8" – Product Number: 326883 – TPO T-Top Vent

PVC

Sizes Available:

2 Pcs/Box – 4" – Product Number: 326868 – PVC T-Top Vent
2 Pcs/Box – 6" – Product Number: 326880 – PVC T-Top Vent
3 Pcs/Box – 8" – Product Number: 326881 – PVC T-Top Vent

APEEL Protective Film



Available on WeatherBond TPO 60-mil and 80-mil TPO, WeatherBond PVC 60-mil PVC and KEE HP membranes and WeatherBond 115-mil and 135-mil Fleece TPO membranes. APEEL Protective Film guards the membrane's surface from scuffs and dirt accumulation during installation, eliminating the need to clean the roof upon roof completion. Durable and easy to remove, APEEL Protective Film helps to save time and labor, improves aesthetics and long-term reflectivity.



APEEL Cover Tape



APEEL Cover Tape is a 6"-wide, 1,640'-long roll of APEEL Protective Film used to protect areas of membrane where APEEL Protective Film has been removed (around details) or was not factory applied (seams). APEEL Cover Tape allows applicators to keep 100 percent of the membrane surface clean during installation and is applied using the APEEL Cover Tape Applicator.

Sizes Available:

6" x 1,640' – Product Number: 333093

Quantity Per Box: 2 rolls/ctn

APEEL Cover Tape Applicator



The APEEL Cover Tape Applicator is made of heavy-duty powder-coated aluminum with stainless steel fasteners. It holds one roll of APEEL Cover Tape and uses size segmented pressure wheels to ensure proper adhesion.

Product Code: 333095

Fasteners and Plates

HPW Fastener

EPDM



Applicable to steel, 22-gauge and heavier, CDX plywood and wood plank deck types. Can be used to secure EPDM reinforced membranes, RPS and for insulation securement. Longer fastener sizes available as special order. Not applicable for securing TPO and PVC membranes.

Sizes Available:

1¼", 2"- 15" (1" Increments)

Size & Quantity Per Box:

1¼", 2"- 6": 1,000; 7"- 12": 500; 13"- 15": 250; 1¼": 1,000

HPWX Fastener

EPDM
TPO
PVC



A #15 diameter fastener applicable to steel, wood and CDX plywood. Can be used to secure EPDM, TPO and PVC membranes.

Sizes Available:

2"- 12" (1" Increments)

14"- 16" (2" Increments)

Size & Quantity Per Box:

2"- 4": 1,000; 5"- 12": 500; 14"- 16": 250

Metal Membrane Plate

EPDM
TPO
PVC



A 2" diameter metal plate, applicable with HPW fasteners, used for insulation attachment on MF Systems or membrane securement at angle changes on Adhered Systems in conjunction with the appropriate WeatherBond fastener.

Sizes Available:

2" dia.

Quantity Per Box: 1,000

HPWX Plate

TPO
PVC



Along with the appropriate fastener, used to secure TPO and PVC membranes to steel, concrete and wood decks.

Sizes Available:

2 ¾" dia.

Quantity Per Box: 1,000

Insulation Screws



Applicable for insulation attachment in both mechanically fastened and fully adhered applications.

Sizes Available:

2"- 8" (1" Increments)

⅝", 2", 3"- 8" (1" Increments)

Size & Quantity Per Box: 2"- 8": 1,000

RetroDriller Fastener

EPDM
TPO
PVC



A specially designed fastener with a ½" drill point used for attaching EPDM, TPO, and PVC membranes to structural steel purlins (up to ¾") in standing seam metal roof retrofit applications.

Sizes Available:

4", 5", 6", 8" & 10"

Size & Quantity Per Box: 500

Insulation Fastening Plate



Applicable with insulation screws, HPW and CD-10 fasteners. Used for insulation securement only on steel, wood and concrete decks.

Sizes Available:

3" dia.

Quantity Per Box: 1,000

Adhesives and Sealants

LC-60 Bonding Adhesive



EPDM

A high-strength, solvent-based contact adhesive that allows quick bonding of cured flashings and membranes to various substrates. LC-60 Bonding Adhesive is designed for bonding EPDM (black or white) non-reinforced or reinforced membranes to approved substrates. LC-60 Bonding Adhesive is yellow in color.

Coverage Rate:

60 square feet per gallon finished surface.

Packaging:

5-gal pail – Product Number: 302036

1-gal can – Product Number: 302037

Shelf Life: 12 months

Low-VOC Bonding Adhesive & Low-VOC Bonding Adhesive 1168



EPDM

TPO

LOW VOC COMPLIANT*

A high-strength, solvent-based contact adhesive that allows bonding of all EPDM and TPO membrane to various porous and non-porous substrates. Low-VOC Bonding Adhesive meets the <250 gpl VOC content requirements of the OTC Model Rule for Single-Ply Roofing Adhesives. Low-VOC Bonding Adhesive 1168 meets the requirements for SCAQMD regulations.

Coverage Rate:

60 square feet per gallon finished surface

Packaging:

5-gal pail – Product Number: 303090

1-gal can – Product Number: 319888 (6/ct)

Shelf Life: 12 months

Low-VOC Bonding Adhesive 1168

Also Available (Not shown)

California-compliant Low-VOC Bonding Adhesive.

Coverage Rate:

60 square feet per gallon

Packaging:

5-gal pail – Product Number: 318847

Shelf Life: 12 months

EPDM

TPO

LOW-VOC COMPLIANT

TPO Bonding Adhesive



TPO

A high-strength, solvent-based contact adhesive that allows bonding of TPO membrane to various porous and non-porous substrates.

Coverage Rate:

60 square feet per gallon finished surface.

Packaging:

5-gal pail – Product Number: 309831

Shelf Life: 12 months

Low-VOC PVC Bonding Adhesive



PVC

LOW VOC COMPLIANT

A high-strength, solvent-based contact adhesive that allows bonding of PVC and KEE-enhanced PVC membrane to various porous and non-porous substrates. This product also meets the <250 gpl VOC content requirements of the OTC Model Rule for Single-Ply roofing adhesives.

Coverage Rate:

60 square feet per gallon finished surface

Packaging:

5-gal pail – Product Number: 309126

Shelf Life: 12 months

Low-VOC HydroBond™ Adhesive



PVC

A water-based, wet lay-in, one-sided dispersion adhesive that is used to secure PVC membranes to a variety of substrates. Cannot be used with KEE HP, TPO or EPDM smooth-backed membrane.

Coverage Rate:

Roller application: 100 square feet per gallon of finished surface.

Spray application: 133 square feet per gallon of finished surface.

* Not Compliant in all CA counties

Adhesives and Sealants

Flexible DASH



**FLEECE
LOW VOC COMPLIANT**

A low-rise, two-component, VOC-free, energy-absorbing, impact-resistant adhesive used to adhere WeatherBond's Fleece membranes and insulation boards to various substrates for a totally non-penetrating system application. Flexible DASH adhesive provides a wider window of temperature workability (25°F – 120°F).

Coverage Rate:

See Technical Data Bulletin.

Packaging:

5-Gallon Jug – Part A – Product Number: 329526
5-Gallon Jug – Part B – Product Number: 329527
Dual Tank HFO – Part A – Product Number: 336340
Dual Tank HFO – Part B – Product Number: 336342
Dual Cartridge – Product Number: 326735

Shelf Life: 12 months (Part A and Part B)

Flexible DASH Accessories

5-Gallon Jug - Static Mixing Tip (Patriot Jr., HULK, PaceCart): 331294
Dual Tank Nozzle Ext Tubes 14": 330881
Dual Tank Nozzle Tips: 341412
Dual Tank Gun Hoses 25': 341411

Acrylic Water-Based Bonding Adhesive



EPDM

A unique synthetic bonding adhesive specifically formulated to replace comparable solvent-based adhesives in the RV, Modular and Commercial Roofing industries. It exhibits excellent adhesion to EPDM membrane.

Coverage Rate:

Approximately 100–120 sq. ft./gallon.

Packaging:

3.5-gal pail – Product Number: 310365

Shelf Life: 12 months in unopened container when stored at temperatures between 50°F and 90°F.

TPO Primer



TPO

A high-solids, clear polymer-based primer used to prepare TPO membrane prior to the application of TPO pressure-sensitive products.

Coverage Rate:

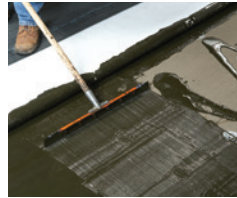
200 – 250 square feet (one surface) per gallon.

Packaging:

(6) 1-gal cans – Product Number: 310471

Shelf Life: 12 months unopened can

Cold-Applied Adhesive



**FLEECE AC
LOW VOC COMPLIANT**

An asphalt-modified polyether, one-sided, wet lay-in adhesive designed to adhere to Fleece AC membranes and WeatherBond's modified base sheet.

Coverage Rate:

67 square feet per gallon for finished or smooth surfaces. 50 square feet per gallon of finished surface for uneven surfaces.

Packaging:

5-gal pail – Product Number: 319689

Shelf Life: 9 months when stored below 90°F

EPDM X-23 Low-VOC Bonding Adhesive



**EPDM
LOW VOC COMPLIANT***

A high-strength, solvent-based contact adhesive that bonds EPDM membranes to various porous and non-porous substrates. This product meets the <250 gpl VOC content requirements of the OTC Model Rule for Single-Ply Roofing Adhesives.

Coverage Rate:

60 square feet per gallon of finished surface.

Packaging:

5-gal pail – Product Number: 324002

Shelf Life: 12 months

Aqua Base 120



**EPDM
TPO
LOW VOC COMPLIANT***

A semi-pressure-sensitive water-based adhesive. This product may be used as a two-sided contact adhesive with EPDM and TPO membranes.

Coverage Rate:

100–120 square feet per gallon finished surface. (May vary due to conditions such as insulation type or wall construction.)

Packaging:

5-gal pail – Product Number: 307431

Shelf Life: 12 months

* Not Compliant in all CA counties

Adhesives and Sealants

Low-VOC UN-TACK™ Adhesive Remover and Cleaner



Low-VOC UN-TACK Adhesive Remover and Cleaner is designed to remove adhesives and primers from a variety of surfaces including single-ply membranes, accessories, metal, plastic, rubber, and glass. May also be used to flush CAV-GRIP III Hoses and Guns prior to storage. Do not use with CAV-PRIME.

Coverage Rate:

250 - 300 FT(2)/Cylinder surface area to be cleaned

Packaging:

85# Aerosol Cylinder – Product Number: 332800

CAV-PRIME Low-VOC EPDM and TPO Primer



Low-VOC EPDM and TPO primer packaged in a pressurized cylinder for spray application. Low-VOC Primer is a solvent-based product designed for one-step priming of EPDM or TPO surfaces prior to the application of Peel & Stick Tape, Coverstrip, and all other Peel & Stick products. This product is designed to comply with VOC regulations. CAV-PRIME is applied via a self-contained spray system coupled with a spray gun with extension wand and applicator attachment kit. CAV-PRIME spray guns, hoses, and applicator attachment kits are each sold separately.

Coverage Rate:

1,760 sq. ft./Cylinder

Packaging:

32 lbs Cylinder – Product Number: 341449

CAV-GRIP® III Adhesive/Primer



**TPO
EPDM**

CAV-GRIP III is a Low-VOC spray applied aerosol contact adhesive and primer that can be used for adhering EPDM and TPO to horizontal and vertical surfaces and Fleece membranes to vertical surfaces. CAV-GRIP III can also be used as a primer for VapAir Seal 725TR and as an unexposed asphalt primer for Flexible DASH.

Coverage Rate:

See Technical Data Bulletin.

Packaging:

#40 Aerosol Cylinder – Product Number: 329902

#85 Aerosol Cylinder – Product Number: 332659

Shelf Life: 12 months unopened container

Dual-Tip Spray Applicator



WeatherBond's Dual-Tip Spray Applicator, specially designed for use with CAV-GRIP III, reduces application time by spraying two streams adhesive with a single CAV-GRIP Spray Gun and Hose.

Product Number: 348903

CAV-PRIME EPDM V-150 Primer



V-150 Primer packaged in a pressurized cylinder for spray application. V-150 Primer is a solvent-based product designed for one-step cleaning and priming of EPDM surfaces prior to the application of Peel and Stick (PAS) Tape and all other pressure-sensitive (PS) products. CAV-PRIME primers are applied using a self-contained spray system coupled with a spray gun with extension wand and applicator attachment kit. CAV-PRIME spray guns, hoses, and applicator attachment kits are sold separately.

Coverage Rate:

1,540 sq. ft./cylinder

Packaging:

27 lbs Cylinder – Product Number: 341446

Adhesives and Sealants

CAV-PRIME Low-VOC Hose & Gun Cleaner



TPO
EPDM

Designed to clean the spray guns and hoses used to apply CAV-PRIME primers. It can also be used to remove primer from various surfaces including single-ply membranes, accessories, and metal.

Packaging:

Small Aerosol Cylinder – Product Number: 341407

CAV-PRIME Accessories

6' Hose – Product Number: 304302

4" Adhesive Roller-Handle – Product Number 300007

4" Adhesive Roller-Cover – Product Number 300008

Spray Gun with 3' Extension – Product Number: 341897

Applicator Attachment Kit – Product Number: 341228

CAV-PRIME Backpack – Product Number: 341898

CAV-PRIME Hose & Gun Cleaner – Product Number: 341407

CAV-GRIP PVC



CAV-GRIP PVC Aerosol Contact Adhesive can be used for a variety of applications: adhering PVC bareback membranes to a variety of horizontal substrates and vertical walls (**cannot be used with any KEE or KEE HP bareback membranes**), adhering Fleece membranes to vertical walls, as a primer for VapAir Seal 725TR, and as an unexposed asphalt primer for Flexible DASH.

Coverage Rate:

See Technical Data Bulletin.

Packaging:

Standard Cylinder – Product Number: 336152

Large Cylinder – Product Number: 336347

CAV-GRIP PVC UN-TACK Low-VOC Adhesive Remover and Cleaner



Designed to flush CAV-GRIP PVC hoses and guns prior to storage, CAV-GRIP PVC UN-TACK is also used to remove adhesives and primers from a variety of surfaces including PVC membranes, accessories, metal, plastic, rubber, and glass.

Coverage Rate: 250-300 FT²/Cylinder surface area to be cleaned.

Packaging:

Small Aerosol Cylinder – Product Number: 336090

* Not Compliant in all CA counties

LIQUISEAL® Liquid Flashing



EPDM
TPO
PVC

A two-component, polyurethane-based system that creates a cold-applied liquid flashing that is compatible with all WeatherBond EPDM, TPO, PVC and KEE HP membranes. LIQUISEAL Liquid Flashing is ideal for flashing oddly shaped penetrations and tying together dissimilar roofing systems without building a knee wall or impeding drainage. Refer to LIQUISEAL Liquid Flashing Technical Data Bulletin and Installation Guide to determine additional primers and reinforcement fabric products required to perform installation.

Coverage Rate: 13.6 square feet per gallon

Packaging: (8) ½ gal/carton, 1-gallon pails

White ½ gallon – Product Number: 330891

White 1-gallon – Product Number: 330892

Gray ½ gallon – Product Number: 333301

Gray 1-gallon – Product Number: 333302

Shelf Life: 12 months unopened container

Multi-Purpose EPDM Primer



EPDM

A solvent-based product designed for cleaning and priming EPDM membranes prior to the application of P&S products.

Coverage Rate:

As high as 450 square feet per gallon with pre-clean EPDM membrane. Approx. 250 square feet per gallon with Dusted EPDM membrane.

Packaging:

(6) 1-gallon cans – Product Number: 309510

(8) 1-quart cans – Product Number: 310382

Shelf Life: 9 months

Low-VOC EPDM and TPO Primer



EPDM
TPO
LOW VOC COMPLIANT

Designed for one-step cleaning and priming of EPDM and TPO surfaces prior to the application of P&S and pressure-sensitive products. It is a Low-VOC product that is ideal for use where environmental issues are a concern.

Coverage Rate:

As high as 700 square feet per gallon with TPO or pre-cleaned EPDM membrane. Approx. 250 square feet per gallon with Dusted EPDM membrane.

Packaging:

(6) 1-gal cans – Product Number: 316522

(8) 1-quart cans – Product Number: 319889

Shelf Life: 9 months

Adhesives and Sealants

CCW-702 and CCW-702LV* Primers



Solvent-based, high-tack adhesives specifically designed to promote maximum adhesion of WeatherBond 725TR Air and Vapor Barrier to approved substrates. They are also used as a surface prep to promote adhesion with Flexible DASH Adhesive.

Coverage Rate:
300–350 square feet per gallon.

Packaging:
5-gal pails
CCW-702 – Product Number: 305363
CCW-702LV – Product Number: 316148

Shelf Life: 12 months unopened pail

PVC and KEE HP Membrane Cleaner



This cleaner is specially formulated to clean both new and in-service PVC and KEE HP membranes.

Packaging:
5-gal closed-top pail – Product Number: 329729

PVC
KEE HP
LOW VOC COMPLIANT

Black & White Lap Sealants



EPDM
LOW VOC COMPLIANT

The consistency enables it to expand and contract with membrane movement without loss of adhesion. Lap Sealants may be used to seal mechanical terminations, the cut edges of WeatherBond Reinforced EPDM membranes and for sealing at splice intersections. Lap Sealant must be applied and feathered on all seam edges by the end of the working day.

Coverage Rate:
22' per tube using a 5/16" bead

Packaging:
25 tubes/carton – Product Number: 309617 – Black
25 tubes/carton – Product Number: 309819 – White

Shelf Life: 12 months

Universal Single-Ply Sealant



EPDM
TPO
PVC
LOW VOC COMPLIANT*

A 100%-solids, solvent-free, one-part, polyether sealant that provides a weathertight seal to a variety of building substrates. Universal Single-Ply Sealant can be used as a termination bar sealant for TPO, PVC and EPDM white adhered and mechanically attached roofing systems.

Coverage Rate:
25' per tube or 600' per carton using a 1/4" bead.

Packaging:
24 Tubes/carton (white); 12 Tubes/carton (gray)

Product Number:
310131 (white); 349227 (gray)

Shelf Life: 12 months unopened container (@ <90°F)

Water Cut-Off Mastic



EPDM
TPO
PVC
LOW VOC COMPLIANT

A one-component, low-viscosity, self-wetting, butyl-blend mastic designed to be used in conjunction with roofing and waterproofing systems. It is primarily used as a sealing agent between various membranes and substrates for compression type terminations.

Coverage Rate:
10' per tube, using a 3/8" bead.

Packaging:
25 Tubes/carton – Product Number: 309830

Shelf Life: 12 months unopened container

Weathered Membrane Cleaner



EPDM
TPO
LOW VOC COMPLIANT*

Used to clean both new and in-service EPDM membrane and TPO membrane prior to the welding process. It helps to loosen and remove dirt and other contaminants from the surface of the membranes and leaves a suitable surface for application of adhesive or primer. Please refer to the Technical Data Bulletins for specific instructions for EPDM and TPO applications. Membrane cleaner is clear in color.

Coverage Rate:
400 square feet (one surface) per gallon.

Packaging:
(2) 1-gal closed-top cans – Product Number: 304066
5-gal closed-top pail – Product Number: 302074

* Not Compliant in all CA counties

Adhesives and Sealants

Splice Adhesive (Black)



EPDM

Designed for splicing cured-to-cured EPDM membranes and non-PS flashings, this high-strength, solvent-based contact cement allows quick bonding of flashing, sheeting, and cured rubber seams. Formulated for application with a ½" medium nap roller and/or a ½"-thick paint brush, the versatile tack time allows large areas to be coated and adhered at one time.

Coverage Rate:

100 square feet per gallon.

Packaging:

(6) 1-gal cans – Product Number: 309550

Shelf Life: 12 months

White One-Part Pourable Sealer



EPDM

TPO

PVC

LOW VOC COMPLIANT

A single-component, moisture-curing, elastomeric polyether sealant that is compatible with white EPDM, TPO and PVC membranes. It is designed to provide a flexible, durable and long-lasting seal around hard-to-flash penetrations. The sealant's consistency allows for quick pocket filling without mixing. Unused sealant is usable for up to 30 days if pouch is resealed with original cap. White one-part pourable sealer is white in color.

Coverage Rate:

122 cubic inches of volume per ½-gal pouch.

Packaging:

(4) ½-gal pouches per bucket

Product Number: 307603

Shelf Life: 18 months

Cut Edge Sealant



TPO

LOW VOC COMPLIANT**

TPO Cut Edge Sealant

A free-flowing polymeric material designed for sealing cut edges (exposed fabric) of TPO membrane.

Coverage Rate:

225'-275' per 16-oz. bottle when applied with ⅛" bead.

Packaging:

(8) 16-oz. bottles/carton – Product Number: 303436

Low-VOC – Product Number: 327530

Shelf Life: 12 months

PVC Cut Edge Sealant

Also Available (Not shown)

PVC

PVC Cut Edge Sealant is not required, but can be used for sealing cut edges (exposed fabric) of WeatherBond PVC Membrane. Cut Edge Sealant is clear in color.

Coverage Rate:

225'-275' per bottle when applied with ⅛" bead.

Packaging:

(12) 16-oz. bottles/carton – Product Number: 307754

Shelf Life: 12 months

PVC Step 2 Primer



A high-solids-content, clear Polymer-based primer used to prepare KEE HP and PVC membrane to be bonded to PVC Pressure Sensitive Cover Strip.

Coverage Rate: As high as 200-250 square feet per gallon.

Packaging: (2) 1-gallon cans

Product Number: 332653

Shelf Life: 12 months

** Certain restrictions apply, see TDB.

* Not Compliant in all CA counties

Adhesives and Sealants

Black One-Part Pourable Sealer



EPDM
LOW VOC COMPLIANT

A single-component, moisture-curing, elastomeric polyether sealant that is compatible with EPDM membranes. It is designed to provide a flexible, durable and long-lasting seal around hard-to-flash penetrations. The sealant's consistency allows for quick pocket filling without mixing. Unused sealant is usable for up to 30 days if pouch is resealed with original cap. Black one-part pourable sealer is black in color.

Coverage Rate:

122 cubic inches of volume per ½-gal pouch.

Packaging:

(4) ½-gal pouches per bucket – Product Number: 307647

Shelf Life: 12 months unopened container

Low-VOC PVC Step 2 Primer



A high-solids-content, clear Polymer-based primer used to prepare KEE HP and PVC membrane to be bonded to PVC Pressure Sensitive Cover Strip. Meets the <250 gpl VOC content requirements of the OTC Model Rule.

Coverage Rate: As high as 700 square feet per gallon.

Packaging: (2) 1-gallon cans

Product Number: 332652

Shelf Life: 6 months

Low-VOC PVC Step 1 Activator



A high-strength, solvent-based activator that allows PVC Pressure-Sensitive Cover Strip to be bonded to PVC or KEE HP membranes. Meets the <250 gpl VOC content requirements of the OTC Model Rule.

Coverage Rate: As high as 250-300 square feet per gallon.

Packaging: (2) 1-gallon cans

Product Number: 332651

Shelf Life: 12 months

Low-VOC Membrane Cleaner (for use on all membranes)



Used to clean both new and in-service, PVC, KEE HP, TPO, and EPDM membranes prior to the seaming process. Low-VOC Membrane Cleaner contains 100% EPA-exempted solvents and can be used in a wide variety of temperatures.

Packaging:

1-gallon cans (2) – Product Number: 326160

5-gallon pail – Product Number: 326860

** Not Compliant in all CA counties*

Air & Vapor Barriers

VapAir Seal 725TR



A 40-mil composite consisting of 35 mils of self-adhering rubberized asphalt laminated to a 5-mil woven polypropylene film. Used as an air and vapor barrier/temporary roof, one-piece poly release liner prevents the material from bonding to itself in the roll and is easily removed for installation. May be used as a temporary roof for up to 120 days. Common substrates include concrete, DensDeck, and SECURACK.

Coverage Rate: 325 FT²/roll

Packaging: 39" x 100'

Thickness: 40 mils

Weight: 67 lbs/roll

Product Number: 330170

Shelf Life: 12 months unopened container

SureMB 90 Base Ply and SureMB 120 Base Ply



A SBS-modified asphalt base sheet. Can be used in multi-ply roofing systems as an air and vapor barrier, or as a temporary roof for up to 60 days. This product is fiberglass-reinforced and meets or exceeds requirements of ASTM 6363 Type 1. When used as an air and vapor barrier, suitable substrates include concrete (primer required), DensDeck Prime, and SECURACK.

SureMB 90 Base Ply

Coverage Rate: 161 FT²/roll (excluding lap)

Packaging: 39 3/8" x 49' 1"

Thickness: 90 mils

Weight: 96 lbs/roll

Product Number: 307253

Shelf Life: 12 months

SureMB 120 Base Ply

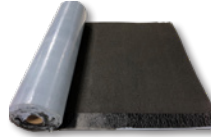
Coverage Rate: 100 FT²/roll

Packaging: 39 3/8" x 32' 9"

Thickness: 120 mils

Weight: 88 lbs/roll

SureMB 70SA Base Ply



Smooth sand surface SBS (Styrene-Butadiene-Styrene) self-adhered membrane designed to be used as an air and vapor barrier and/or temporary roof (for up to 60 days).

Coverage Rate: 200 FT²/roll

Packaging: 39 3/8" x 61'

Thickness: 70 mils

Weight: 78 lbs/roll

Product Number: 335630

Shelf Life: 12 months from manufacture date when stored indoors in temperatures below 90°F (32°C)

VapAir Seal MD



A 15-mil composite reinforced aluminum-coated poly with a self-adhering SBS. Used as an air and vapor barrier direct to metal decking. Meets UL 1256 and FM 4470 internal fire ratings. Reinforced aluminum-coated poly stands up to the toughest roof traffic. This product's self-healing characteristics allow for fastening penetration while maintaining IECC air leakage requirements of 0.04 cfm.

Coverage Rate: 458 FT²/roll

Packaging: 42 1/2" x 131'

Thickness: 15 mils

Weight: 28 lbs/roll

Product Number: 321931

Shelf Life: 12 months unopened container

SureMB 90TG Base Ply and SureMB 120TG Base Ply



Premium smooth-surfaced SBS torch-applied membranes reinforced with fiberglass mat. Can be used as a base ply in multi-ply systems, as an air and vapor barrier, or as a temporary roof for up to 60 days. Excellent for low temperature applications when use of peel-and-stick membranes may not be possible. Ideal substrates include primed concrete and primed SECURACK.

SureMB 90TG Base

Coverage Rate: 161 FT²/roll (excluding lap)

Packaging: 39 3/8" x 49' 1"

Thickness: 90 mils

Weight: 95 lbs/roll

Product Number: 323887

Shelf Life: 12 months unopened

SureMB 120TG Base Ply

Coverage Rate: 107 FT²/roll (excluding lap)

Packaging: 39 3/8" x 32' 9"

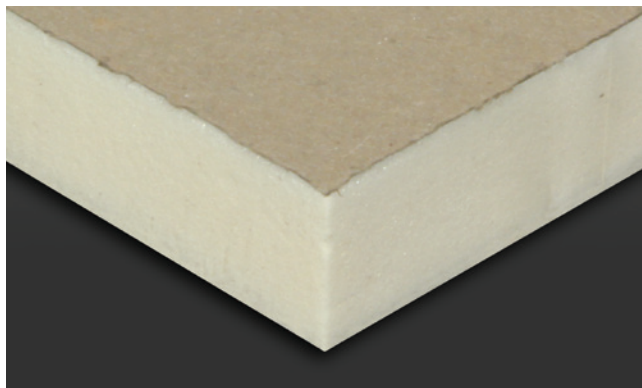
Thickness: 120 mils

Weight: 85 lbs/roll

Product Number: 323313

Shelf Life: 12 months unopened

Insulation



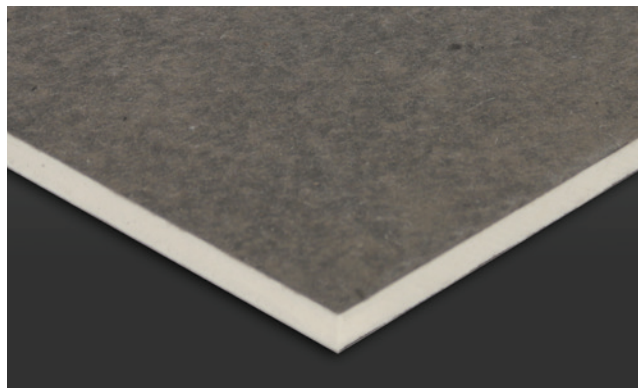
XP Polyiso

A rigid roof insulation panel composed of a closed-cell polyisocyanurate foam core bonded to glass-reinforced felt (GRF) facers. UL and FM approved for direct applications over steel decks, polyiso provides the highest R-value per inch of any commercially available insulation product.

Sizes: 4' x 4' and 4' x 8'

Thickness: ½" to 4 ½"

Compressive Strength: 20 and 25psi



XP HD Polyiso

A rigid-roof insulation cover board composed of a high-density closed-cell polyisocyanurate foam core bonded on each side to glass-reinforced felt (GRF). XP HD is specifically designed for use as a cover board in mechanically-attached systems only.

Sizes: 4' x 4' and 4' x 8'

Thickness: ½"

Compressive Strength: 80psi



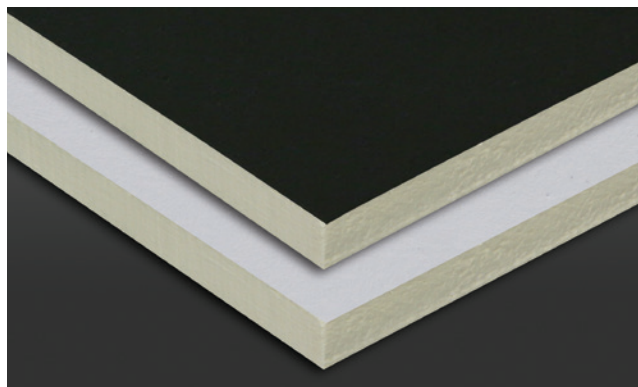
XFP HD Plus

A rigid roof insulation panel composed of a ½" high-density, closed-cell polyisocyanurate foam core bonded to a premium-performance coated glass facer (CGF). Specifically designed for use as a cover board. Provides an FM 1-90 wind uplift rating with only 8 fasteners per 4' x 8' board.

Sizes: 4' x 4' and 4' x 8'

Thickness: ½"

Compressive Strength: 109psi max



XFP HD Polyiso

ReadyFlash
TECHNOLOGY

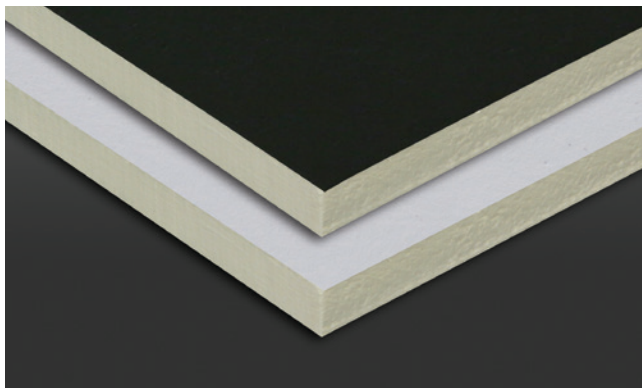
A rigid roof insulation panel composed of a ½" high-density, closed-cell polyisocyanurate foam core bonded to a premium performance coated glass facer (CGF). Specifically designed for use as a cover board. Provides 5 times the R-value at 5 times less weight than traditional gypsum cover boards. ½" achieves UL Class A fire rating over combustible decks. ReadyFlash Technology is a standard feature of XFP HD Polyiso. ReadyFlash features a dark facer on one side of the insulation board and a light facer on the other. Utilizing the sun's energy, the dark facer accelerates adhesive flash-off while the light facer slows it down.

Sizes: 4' x 8'

Thickness: ½"

Compressive Strength: 109psi max

Insulation



XFP Polyiso

ReadyFlash
TECHNOLOGY

A rigid roof insulation panel composed of a closed cell polyisocyanurate foam core bonded to high performance coated glass facers (CGF). The premium facer provides improved fire ratings, enhanced wind uplift performance and superior moisture and mildew resistance. Ideal for use in adhered membrane systems. 1" board achieves UL Class A Fire Rating over combustible decks. ReadyFlash Technology is a standard feature of XFP Polyiso. ReadyFlash features a dark facer on one side of the insulation board and a light facer on the other. Utilizing the sun's energy, the dark facer accelerates adhesive flash-off while the light facer slows it down.

Sizes: 4' x 4' and 4' x 8'

Thickness: ½" to 4 ½"

Compressive Strength: 20 and 25psi

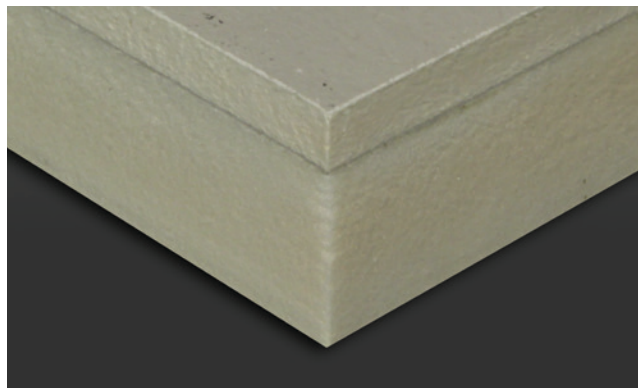


XP-NB Polyiso

A rigid roof insulation composite panel comprised of a closed-cell polyisocyanurate foam core bonded to a glass-reinforced felt (GRF) facer on one side and ¾" oriented strand board (OSB) on the other.

Sizes: 4' x 8'

Thickness: 1½" to 4 ½"



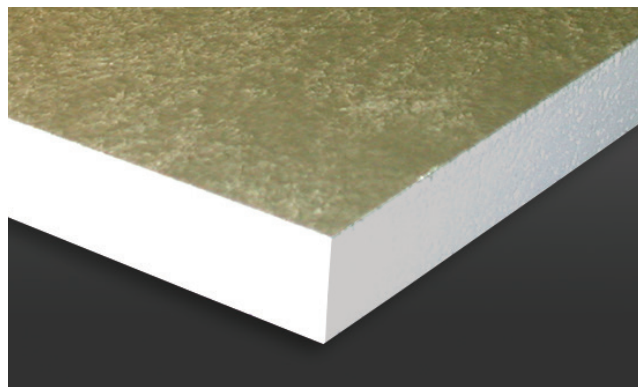
XFP-HD Composite

A unique composite insulation panel comprised of a ½" high-density polyiso cover board bonded during the manufacturing process to XFP rigid polyiso roof insulation. Eliminates the need for a separate cover board, reduces inter-ply adhesives, and saves labor on the roof.

Sizes: 4' x 4' and 4' x 8'

Thickness: 1½" to 4 ½"

Compressive Strength: 20psi (XFP base layer) and 109psi max (XFP HD cover board)



Insulfoam® SP EPS

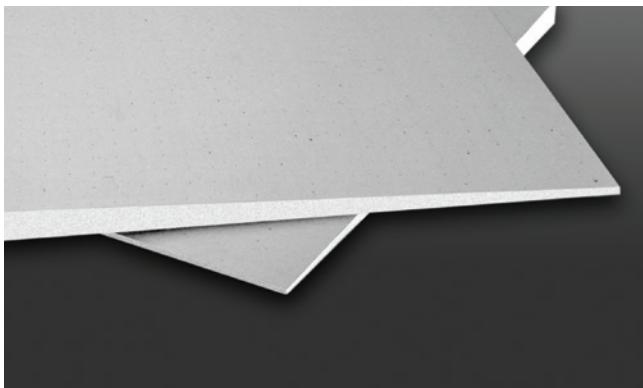
Premium coated glass-faced insulation approved for mechanically-attached or self-adhering systems without a slip sheet. Long-term R-value providing up to R30 in a single layer.

Sizes: 4' x 4' or 4' x 8'; custom sizes and taper panels available

Thickness: ¾" to 6"

Densities: 1.25 to 3 lb/ft³

Insulation



Tapered Polyiso

A sloped, rigid roof insulation panel composed of a closed-cell polyisocyanurate foam core bonded to a coated glass or fiber-reinforced facer. Designed to promote positive drainage and prevent ponding water.

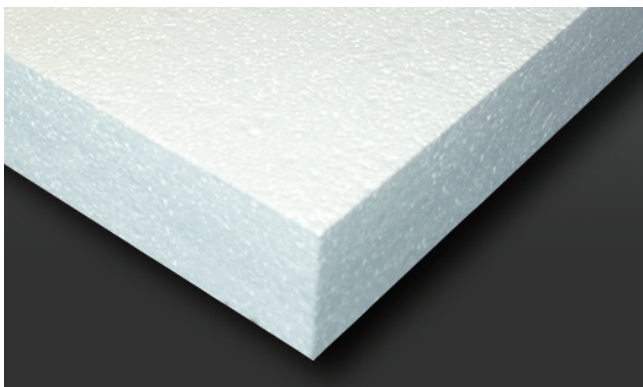
Hinged Target Sumps and Pre-Cut Hips and Valleys ship ready to install, require no field cuts and save valuable time on the roof. Multiple thicknesses and slopes available to accommodate specific job conditions with no waste, thus reducing disposal fees.

Sizes: 4' x 4' (Hip/Valley) and 8' x 8' (Sump)

Thickness: ½" to 4½" (multiple layers utilized for increased thicknesses)

Compressive Strength: 20 and 25psi*

*25psi available in CGF only.



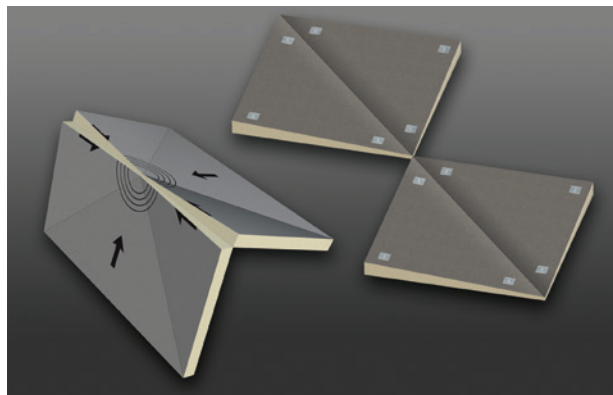
Insulfoam EPS

High compressive-strength engineered EPS. Ideal for plaza decks, garden or vegetative roofs, IRMA and high traffic areas that require additional strength and water-resistance. Available in thicknesses up to 40" in a single layer.

Sizes: 4' x 4' or 4' x 8'; custom sizes and taper panels available

Thickness: ¼" to 40" per panel

Compressive Strength: 40 and 60 psi



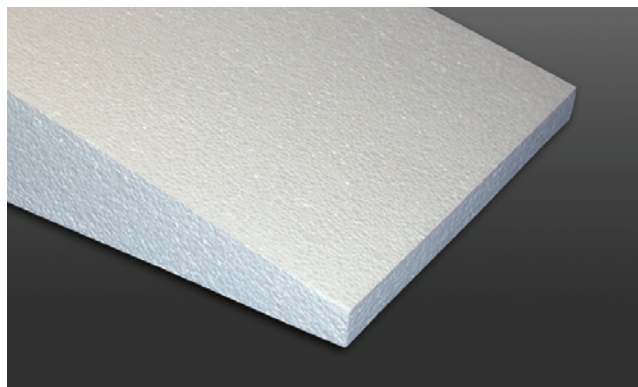
Tapered Accessories

Hinged Target Sumps and Pre-Cut Hips and Valleys ship ready to install, require no field cuts and save valuable time on the roof. Multiple thicknesses and slopes available to accommodate specific job conditions with no waste, thus reducing disposal fees.

Sizes: 4' x 4' (Hips & Valleys) and 8' x 8' (Hinged Sumps)

Thickness: ½" to 4½" (multiple layers utilized for increased thicknesses)

Compressive Strength: 20 and 25psi



Insulfoam Tapered EPS

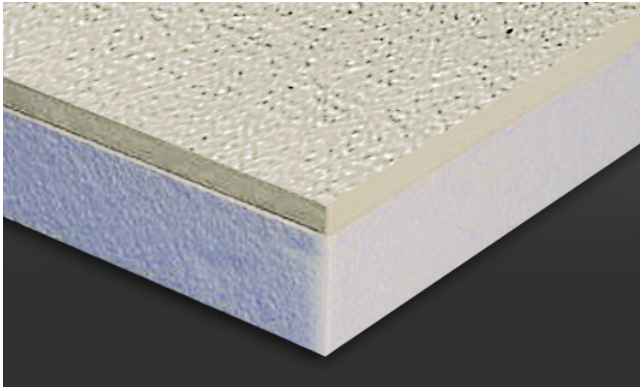
Tapered engineered EPS insulation available in virtually any slope, with panels up to 40" in a single layer. Can be combined with WeatherBond polyiso for tapered hybrid roof systems. Custom saddles and crickets also available.

Slope: Virtually any slope

Thickness: ½" to 40"

Densities: 1 to 3 lb/ft³

Insulation



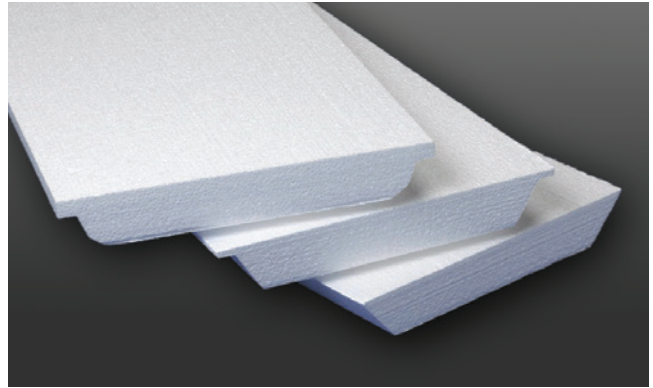
XFP HD EPS Composite

A premium composite insulation consisting of a closed-cell, lightweight and resilient expanded polystyrene (EPS) bonded to high-density polyisocyanurate cover board. The polyisocyanurate cover board is manufactured at $\frac{1}{2}$ " thickness and 100psi compressive strength. The EPS is available in compressive strengths from 10–60psi and densities from 1–3 pcf.

Sizes: 4' x 4' and 4' x 8'

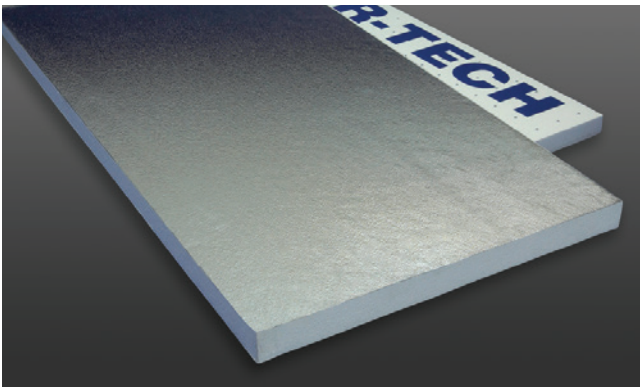
Thickness: 1.5" to 7"

* Manufactured in flat and tapered panels.



EPS Flute Fill

Flute fill is a custom-made, engineered insulation consisting of a superior closed-cell, lightweight expanded polystyrene (EPS). WeatherBond's flute fill is manufactured to meet or exceed the requirements of ASTM C578 Standard Specification for rigid, cellular polystyrene thermal insulation. WeatherBond flute fill can be manufactured in a range of sizes, densities, thicknesses and profiles to meet any job-specific needs.



R-Tech

A high-performance rigid insulation consisting of a superior closed-cell, lightweight and resilient expanded polystyrene (EPS) with advanced polymeric laminate facers. R-Tech comes with a factory-adhered white facer and a metallic-reflective facer. R-Tech has excellent dimensional stability, compressive strength and water-resistant properties. R-Tech can contribute towards LEED certification credits.

Sizes: 4' x 4' and 4' x 8'

Thickness: $\frac{3}{8}$ " to 1"



R-Tech® Fanfold Recover Board

A high-performance, rigid insulation consisting of a superior closed-cell, lightweight and resilient expanded polystyrene (EPS) with advanced polymeric laminate facers. R-Tech is available with factory-adhered metallic-reflective facers and white facers. R-Tech Fanfold Recover Board can contribute toward LEED® certification credits.

Sizes: 2 square bundles (2' x 4' folded/4' x 50' unfolded)

Thickness: $\frac{1}{4}$ ", $\frac{3}{8}$ ", $\frac{1}{2}$ ", $\frac{3}{4}$ "



WEATHERBOND ROOFING SYSTEMS

WeatherBond EPDM Packaging Guide

As WeatherBond EPDM product offering has increased, it has become necessary to re-categorize its products into color families for easier identification in the warehouse. Standard sheeting will be packaged in full-color bags while membrane with factory-applied peel & stick seam tape will come in white bags with color-matched ink.

Standard Sheeting



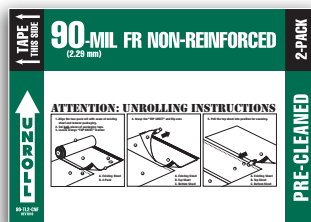
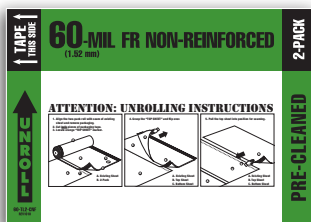
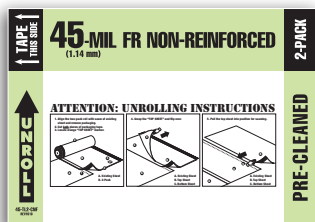
Membrane With Factory-Applied Seam Tape

- 1 Unroll direction
- 2 Length and width indicated on core
- 3 WeatherBond logo prominently displayed on large label for easy brand identification
- 4 Enlarged gauge and product identification
- 5 Code Approvals
- 6 Clean or Dusted designation
- 7 2-Pack designation (when applicable)
- 8 Factory-applied tape unrolling instructions
- 9 Color strip on bags for membrane with factory-applied seam tape

FR Non-Reinforced Membranes (GREEN FAMILY)



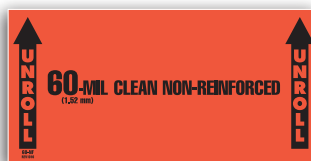
Standard
Sheeting



P&S
Sheeting

Clean Non-Reinforced Membrane (REDWOOD)

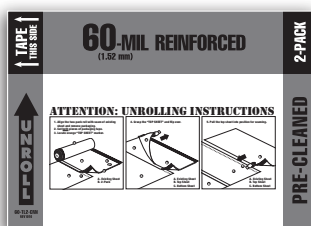
Standard
Sheeting



Reinforced Membranes (GRAY FAMILY)



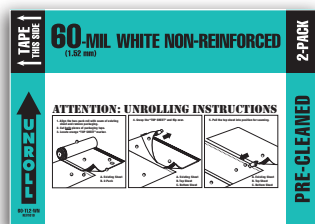
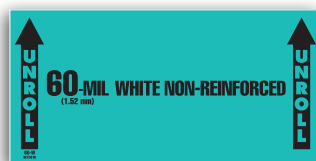
Standard
Sheeting



P&S
Sheeting

White Membranes (TEAL FAMILY)

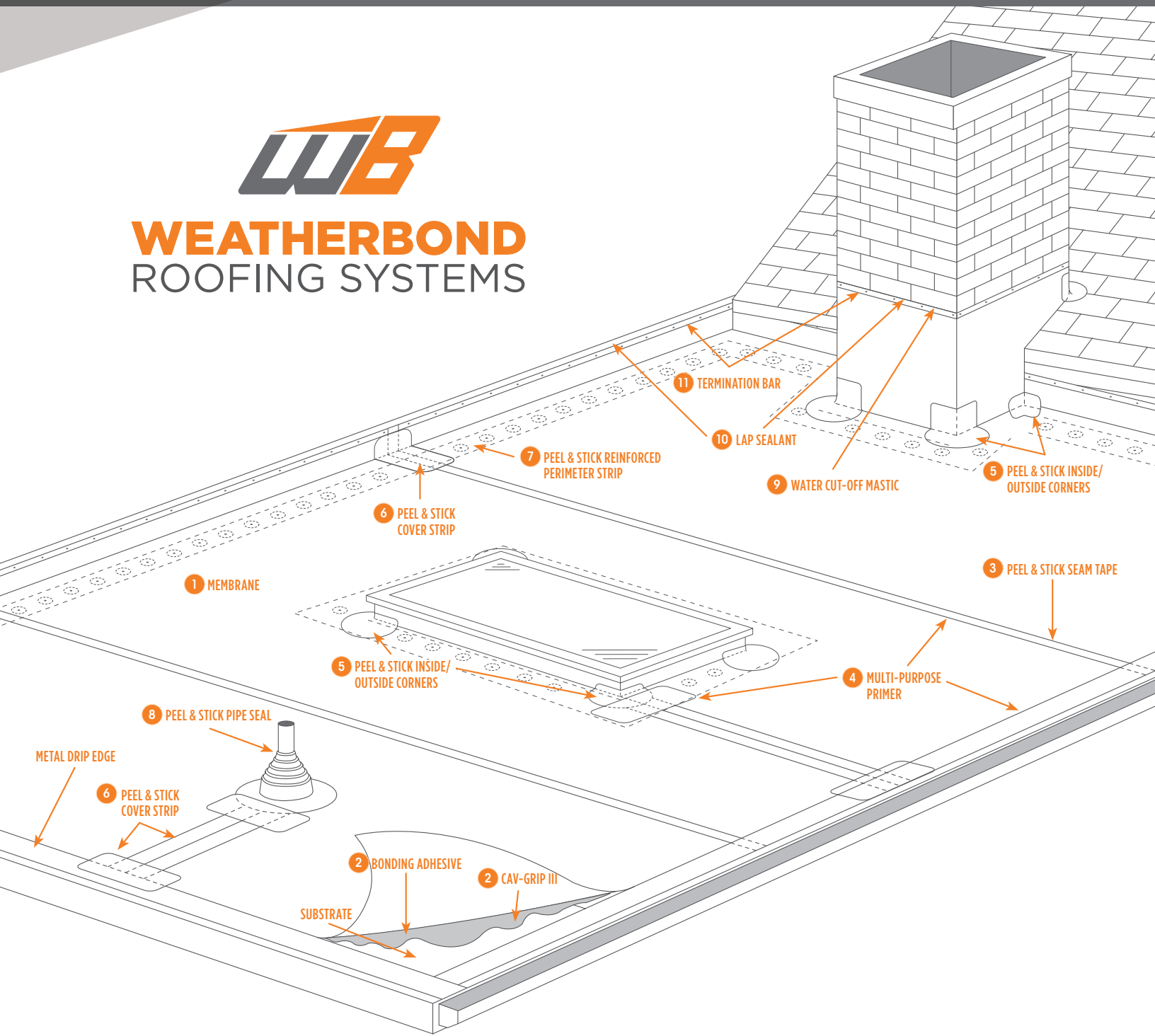
Standard
Sheeting



P&S
Sheeting



WEATHERBOND ROOFING SYSTEMS



WeatherBond EPDM roofing membrane can be applied over a variety of substrates including wood, metal, plastic, fiberglass, rubber, masonry, brick, smooth-surface built-up roofs, painted surfaces, wood fiberboard, lightweight concrete and polyisocyanurate to name a few. The substrate surface should be clean and free of dust, dirt, rust, oil, grease and loose materials.

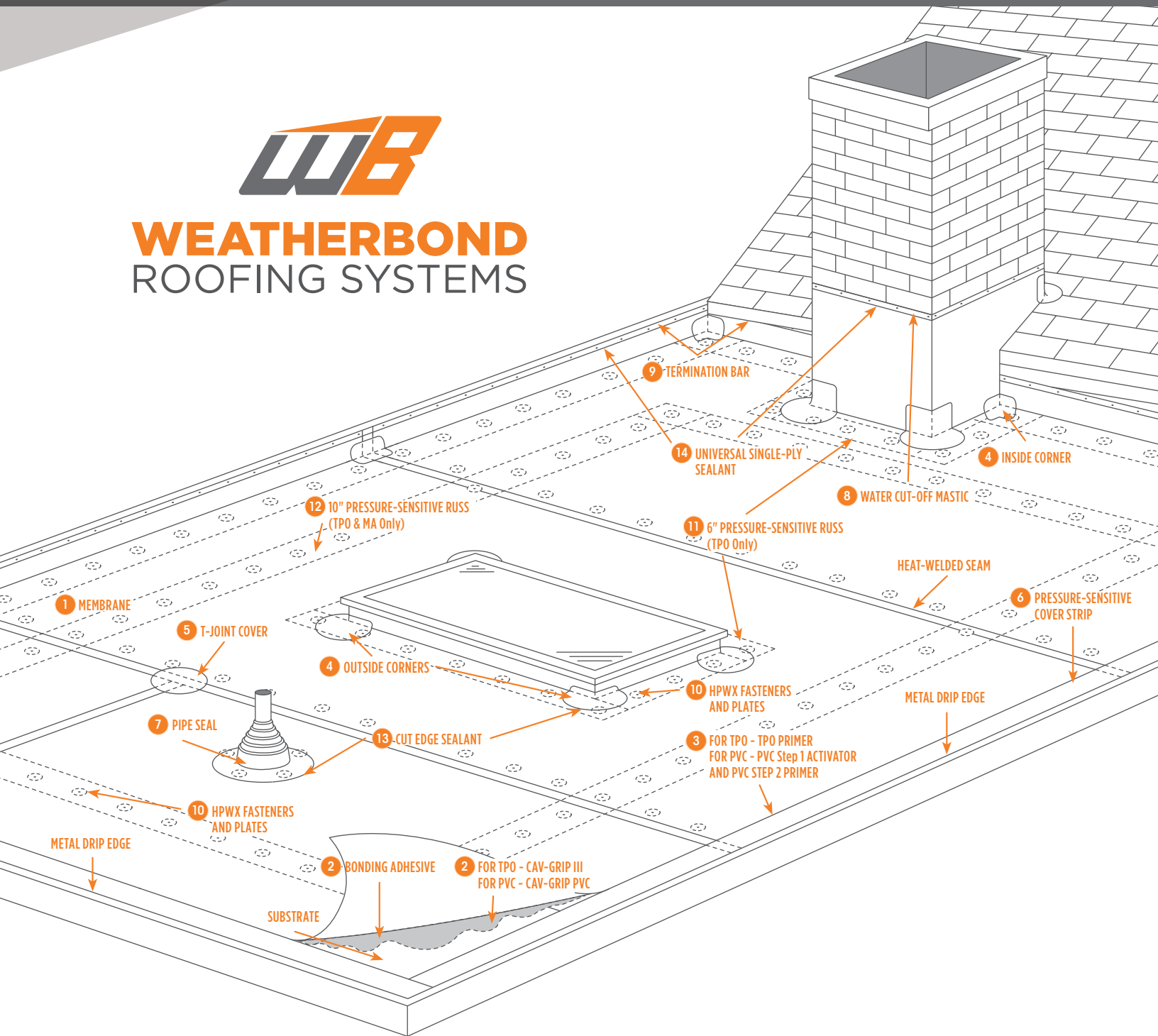
WeatherBond **EPDM**

Rubber-Based, Low-Slope Roofing Systems

Product	Description and Use	Calculation
1 Membrane	EPDM membrane is used as the waterproofing material which is bonded to the substrate. EPDM membrane is available in different sizes and lengths as well as black and white. Membrane should extend up perimeter walls by 12 in. and hang over the edge of the roof by 3 in. Seams should overlap by 3 in.	Roof length X width + 12 in. for wall terminations + 3 in. overlap for seams + 3 in. overhang off the roof edge
2 Bonding Adhesive	WeatherBond LC-60 Bonding Adhesive is used to bond the membrane to the substrate. Bonding Adhesive is roller applied to both surfaces and the membrane is rolled into place. Finished coverage rate is 60 sq. ft./gallon.	Roof length x width + wall and curb area if greater than 12 in. tall / 60 = gallons of bonding adhesive needed
2 CAV-GRIP III	Low-VOC Aerosol Adhesive/Primer used for adhering all WeatherBond TPO and EPDM membranes to walls and horizontal surfaces.	Coverage rate is 1,000 SF per 40 lb cylinder
3 Peel & Stick Seam Tape	Peel & Stick Seam Tape is used to bond two panels of WeatherBond EPDM membrane together. Seam Tape is available in rolls up to 100 ft. in length.	Panel size and layout will determine seam length
4 Multi-Purpose Primer	Multi-Purpose primer is used to prepare the EPDM membrane surface anywhere WeatherBond Peel & Stick products are used, including Seam Tape, Cover Strip, Pipe Seals, and Inside/Outside Corners.	Coverage rate is 3 in. x 300 linear ft./gallon
5 Peel & Stick Inside/Outside Corners	Peel & Stick Inside/Outside Corners are an easy way to finish corner details. Primer is required wherever the Corners are used. WeatherBond Peel & Stick Uncured Flashing can also be used.	One Peel & Stick Inside/Outside Corner per corner
6 Peel & Stick Cover Strip	Peel & Stick Cover Strip is used to strip in metal drip edges, as well as cover cuts in the EPDM membrane. T-Joint Covers, which are to be used at all locations where three layers of membrane overlap, can also be made from Cover Strip. Cover Strip is available in rolls up to 100 ft. in length.	Metal drip edge length + distance from penetrations to the nearest edge of the membrane + T-Joint Covers / 100 = number of rolls needed
7 Peel & Stick Reinforced Perimeter Strip	Peel & Stick Reinforced Perimeter Strip is required for additional securement at any vertical angle change such as curbs, skylights, walls, etc. Available in 100' rolls.	Length of parapet wall + length of skylight perimeters + length of any other locations of angle change / 100
8 Peel & Stick Pipe Seal	Pre-molded Peel & Stick Pipe Seals create a watertight seal around cylindrical penetrations from 1 in. to 6 in. in diameter.	One Pipe Seal for every 1 in. to 6 in. pipe
9 Water Cut-Off Mastic	A gasket-forming liquid compression sealant used behind termination bars and pipe seals.	10 linear ft./tube
10 Lap Sealant	Used to seal exposed membrane edges including Cover Strip edges, tops of termination bars and pipe seal edges.	22 linear ft./tube
11 Termination Bar	Used to terminate membrane on a vertical surface including on a parapet wall or over the roof edge. Available in 10 ft. lengths.	Length of perimeter + length of other vertical terminations



WEATHERBOND ROOFING SYSTEMS



WeatherBond TPO and PVC are highly reflective and completely heat-weldable single-ply roofing systems. The membrane is Cool Roof Rating Council (CRRC) certified, providing superior reflectivity and cool roof capabilities. Every WeatherBond TPO and PVC membrane is reinforced with a strong fabric that creates a durable yet flexible rooftop.

WeatherBond TPO & PVC

Mechanically Attached & Fully Adhered Roofing Systems

Product	Description and Use		Calculation
	Mechanically Attached	Fully Adhered	
1 Membrane	TPO and PVC membrane is used as the waterproofing material which is bonded or mechanically attached to the substrate. TPO and PVC membrane is available in various thicknesses, widths and lengths. Membrane should extend up perimeter or parapet walls by at least 12 in. and hang over the edge of the roof by 3 in. Seams should overlap by 3 or 6 in.*		Roof length x width + 12 in. or more for wall or curb terminations + 3 or 6 in. overlap for seams + 3 in. overhang off the roof edge.
2 TPO Bonding Adhesive	N/A	WeatherBond TPO Bonding Adhesive is used to bond the membrane to the substrate. Bonding Adhesive is roller applied to both surfaces and the membrane is rolled into place. Finished coverage rate is 60 sq. ft./gallon.	Roof length x width + wall and curb area if greater than 12 in. tall / 60 = gallons of bonding adhesive needed.
2 Low-VOC PVC Bonding Adhesive	N/A	WeatherBond's Low-VOC PVC Bonding Adhesive is used to bond PVC membrane to the substrate.	Roof length x width + wall and curb area if greater than 12 in. tall / 60 = gallons of bonding adhesive needed
2 CAV-GRIP III (TPO Only)	N/A	Low-VOC Aerosol Adhesive/Primer used for adhering all WeatherBond TPO and EPDM membranes to walls and horizontal surfaces.	Approximate coverage rate is 1000 SF per #40 cylinder.
2 CAV-GRIP PVC (PVC Only)	N/A	Low-VOC Aerosol Adhesive/Primer used for adhering all WeatherBond PVC membranes to walls and horizontal surfaces (cannot be used with KEE HP bareback membranes).	Approximate coverage rate is 750 SF per standard cylinder.
3 TPO Primer	TPO Primer is used to prepare the TPO membrane surface anywhere WeatherBond's Pressure-Sensitive products are used, including Cover Strip and RUSS.		Coverage rate is 200–250 ft ² /gallon.
3 PVC Step 1 Activator and Step 2 Primer	PVC Step 1 Activator is a high-strength, solvent-based activator that allows PVC Pressure-Sensitive (PS) Cover Strip to be bonded to PVC or KEE HP membranes. PVC Step 2 Primer is applied after Step 1 Primer to improve adhesion of PVC pressure-sensitive Cover Strip.		PVC Step 1 Activator coverage rate is 250–300 ft ² /gallon. PVC Step 2 Primer coverage rate is 200–250 ft ² per gallon.
4 Inside/Outside Corners	Inside/Outside Corners are an easy way to finish corner details. After flashing a curb or any vertical surface use inside or outside corners to finish the detail.		One Inside or Outside Corner/corner.
5 T-Joint Cover	Non-reinforced flashings used to seal T-Joint Splice Intersections		One T-Joint Cover
6 TPO Pressure-Sensitive Cover Strip	Non-reinforced TPO laminated to pressure-sensitive tape is used to strip in metal drip edges, as well as cover cut edges of TPO membrane. PS Cover Strip is available in rolls 100 ft. in length and 6 in. in width.		Metal drip edge length in ft. / 100 = number of rolls needed.
6 PVC Pressure-Sensitive Cover Strip	Non-Reinforced KEE HP flashing laminated to a nominal 35-mil, fully cured, pressure-sensitive, synthetic rubber adhesive used to strip in metal edging. PVC Step 1 Primer and PVC Step 2 Activator Required.		Metal drip edge length in ft. / 100 = number of rolls needed
7 Pipe Seal	Pre-molded Pipe Seals create a watertight seal around cylindrical penetrations from 1 in. to 6 in. in diameter. Split Pipe Seals are also available from 1 in. to 6 in. in diameter.		One Pipe Seal for every 1 in. to 6 in. pipe.
8 Water Cut-Off Mastic	Water Cut-Off Mastic is a gasket-forming liquid compression sealant applied behind the membrane at drain covers, behind termination bars and pipe seals.		10 linear ft./tube
9 Termination Bar	Used to terminate membrane on a vertical surface including on a parapet wall or over the roof edge. Available in 10 ft. lengths.		Length of perimeter + length of other vertical terminations.
10 HPWX Fasteners and Plates	HPWX Fasteners are heavy-duty #15 phillips head screws used in conjunction with 2 3/4 in. wide metal barbed, HPWX Plates. HPWX Fasteners and Plates are used for membrane and RUSS attachment.*		At least one fastener and plate/ft. of RUSS and membrane seam. See specification for specific attachment information.
	For mechanically attached TPO and PVC, HPWX Fasteners and plate are required a maximum of 12" OC in the seams and to secure the PS RUSS.*	For fully adhered TPO and PVC, HPWX Fasteners and Plates are required a maximum of 12" OC to secure the PS RUSS.*	
11 6" TPO Pressure-Sensitive RUSS	Used in conjunction with TPO Primer. 6"-wide Pressure-Sensitive RUSS is used as additional membrane securement at walls, curbs, angle changes, etc. 6" RUSS comes in 100' rolls.		Add the length of all curbs, parapets and angle changes in ft. / 100.
12 10" TPO Pressure-Sensitive RUSS	To reduce time and labor cost, 10" Pressure-Sensitive RUSS can be used in conjunction with TPO Primer to form perimeter sheets on Mechanically Attached Systems.	N/A	10" RUSS comes in 100' rolls. Roof perimeter in ft. / 100.
13 Cut Edge Sealant	A white- or clear-colored sealant used to seal cut edges of WeatherBond TPO and PVC membrane. A coverage rate of approximately 225–275 linear ft. per squeeze bottle can be achieved when a 1/8" diameter bead is applied.		Typical usage is 1 bottle/1000 sq. ft. of membrane.
14 Universal Single-Ply Sealant	Used for general caulking such as above termination bars.		20 linear ft./tube

*Please consult WeatherBond TPO & PVC Installation Guides for installation criteria.



WEATHERBOND ROOFING SYSTEMS

Single-Ply Simplified

P.O. Box 251 | Plainfield, PA 17081 | 866.471.5125 | FAX: 717.960.4034 | www.weatherbondroofing.com

Disclaimer: All product information in this guide is subject to change without notice. While WeatherBond makes every effort to provide the most accurate, up-to-date information, occasionally, or more items in our guide may be mislabeled. For the most up-to-date version visit www.weatherbondroofing.com.

© 2023 WeatherBond. 11.28.23 **REPRINT REQUEST CODE:** 607674 WB-4342 - "WeatherBond Product Reference Guide"

WeatherBond is a trademark of WeatherBond. InsulFoam and R-Tech are trademarks of InsulFoam. SECURLOCK is a trademark of USG Corporation. DensDeck is a trademark of Georgia Pacific. HydroBond, CAV-GRIP, UN-TACK, VapAir Seal, and LIQUISEAL are trademarks of Carlisle Construction Materials, LLC. LEED is a registered trademark of the U.S. Green Building Council.