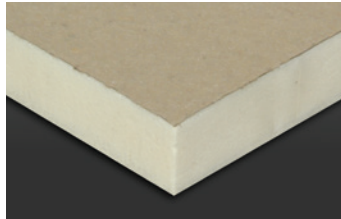


WeatherBond Polyiso

A ready reference guide for ordering insulation for your next job.



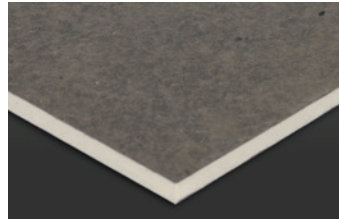
XP Polyiso

A rigid roof insulation panel composed of closed-cell polyisocyanurate foam core bonded to **glass-reinforced felt (GRF) facers**. UL and FM approved for direct application over steel decks, polyiso provides the highest R-value per inch of any commercially available insulation product.

Sizes: 4' x 4' and 4' x 8'

Thickness: ½" to 4½"

Compressive Strength: 20 and 25 psi



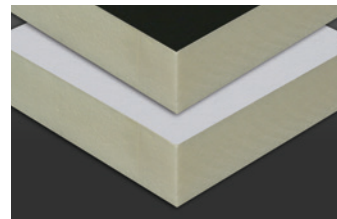
XP HD

A rigid roof insulation panel composed of ½" high-density, closed-cell polyisocyanurate foam core bonded to **glass-reinforced felt (GRF) facers** and specifically designed to be used as a cover board in mechanically-fastened or induction-welded systems only.

Sizes: 4' x 4' and 4' x 8'

Thickness: ½"

Compressive Strength: 80 psi max



XFP Polyiso

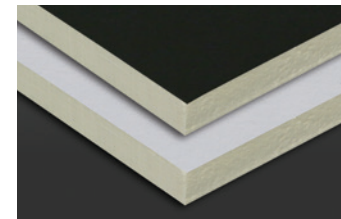
ReadyFlash
TECHNOLOGY

A rigid roof insulation panel composed of a closed-cell polyisocyanurate foam core bonded to high performance **coated glass facers (CGF)**. Ideal for use in adhered membrane systems. 1" board achieves UL Class A fire rating over combustible decks.

Sizes: 4' x 4' and 4' x 8'

Thickness: ½" to 4½"

Compressive Strength: 20 and 25 psi



XFP HD

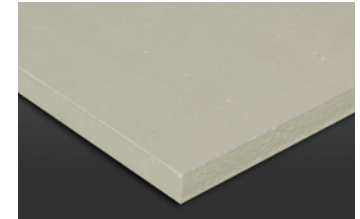
ReadyFlash
TECHNOLOGY

A rigid roof insulation panel composed of ½" high-density, closed-cell polyisocyanurate foam core bonded to a premium performance coated glass facer (CGF) specifically designed for use as a **cover board**. Provides 5 times the R-value at one-fifth the weight of traditional gypsum cover boards. ½" board achieves UL Class A fire rating over combustible decks.

Sizes: 4' x 4' and 4' x 8'

Thickness: ½"

Compressive Strength: 109 psi max



XFP HD Plus

A rigid roof insulation panel composed of a ½" high-density, closed-cell polyisocyanurate foam core bonded to a premium performance coated glass facer (CGF) specifically designed for use as a **cover board**. Enhanced performance of the HD Plus product provides a **FM 1-90 wind uplift rating with only 8 fasteners**.

Sizes: 4' x 4' and 4' x 8'

Thickness: ½"

Compressive Strength: 109 psi max



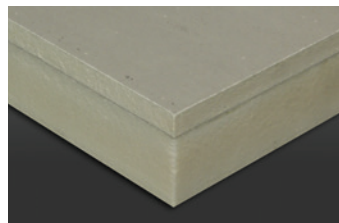
XP-NB Polyiso

A rigid roof insulation **composite panel** composed of closed-cell polyisocyanurate foam core bonded to a glass-reinforced felt (GRF) facer on one side and ¾" oriented strand board (OSB) on the other.

Sizes: 4' x 4' (routed 3 sides) and 4' x 8' (routed 4 sides)

Thickness: 1½" to 4½"

Typical Thickness: 1½", 2", 2½", 3", and 4"



XFP HD Composite

A unique composite insulation panel comprised of ½" high-density polyiso cover board bonded during the manufacturing process to XFP rigid Polyiso roof insulation. Eliminates the need for a separate cover board, reduces interply adhesives and saves labor on the roof. **A single product solution** that provides a FM 1-90 wind uplift rating with only 6 fasteners and meets FM's Very Severe Hail (VSH) requirements.

Sizes: 4' x 4' (47.5" x 47.5") and 4' x 8' (47.5" x 95.5")

Thickness: 1.5", 2.0", 2.5", 3.0", 3.5", 4.0"

Compressive Strength: 20 psi (XFP base layer) and 109 psi max (XFP HD cover board)

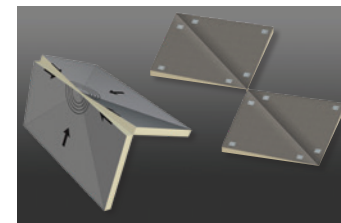


Tapered Polyiso

A sloped rigid roof insulation panel composed of closed cell polyisocyanurate foam core bonded to a coated glass or fiber-reinforced facer. Designed to promote **positive drainage** and **prevent ponding water**.

Sizes: 4' x 4' and 4' x 8'

Compressive Strength: 25 psi



Tapered Accessories

Hinged Target Sumps and Pre-Cut Hips and Valleys ship ready to install, **require no field cuts and save valuable time on the roof**. Multiple thicknesses and slopes available to accommodate specific job conditions with no waste, thus reducing disposal fees.

Sizes: 4' x 4' (Hip/Valley) and 8' x 8' (Sump)

Thickness: As required by job

Slope: As required by job



R-Tech® Fanfold Recover Board

A high-performance, rigid insulation consisting of a superior closed-cell, lightweight and resilient expanded polystyrene (EPS) with advanced polymeric laminate facers. R-Tech is available with factory-adhered metallic-reflective facers and white facers. R-Tech Fanfold Recover Board can contribute toward LEED® certification credits.

Sizes: 2 square bundles (2' x 4' folded/4' x 50' unfolded)

Thickness: ¼", ¾", ½", ¾"



WEATHERBOND
ROOFING SYSTEMS

Single-Ply Simplified

P.O. Box 251 | Plainfield, PA 17081 | 866.471.5125 | FAX: 717.960.4034 | www.weatherbondroofing.com

© 2023 WeatherBond. 05.30.23 REPRINT REQUEST CODE: 609505 WB-7511 - "Insulation Quick Reference Sheet"
WeatherBond is a trademark of WeatherBond. R-Tech is a trademark of Insulfoam.
LEED is a registered trademark of the U.S. Green Building Council.