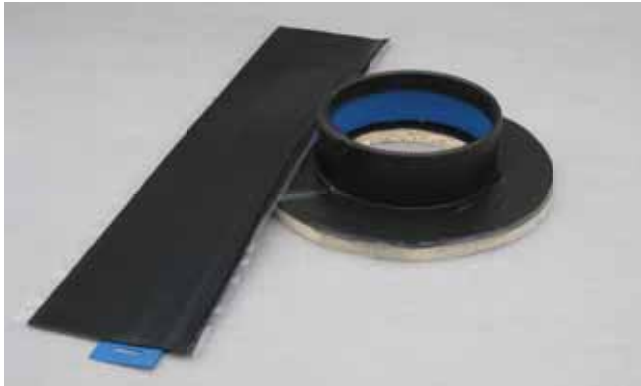


# WeatherBond EPDM

## Peel & Stick Pourable Sealer Pockets



### Overview

WeatherBond Peel & Stick (P&S) Pourable Sealer Pockets are prefabricated pockets consisting of a 2" (50 mm)-wide plastic support strip with Peel & Stick Seam Tape-backed uncured EPDM flashing.

### Features and Benefits

- Pourable Sealer Pockets are ideal for sealing irregular, hard-to-finish penetrations through the membrane
- Available in 4" (100 mm), 6" (150 mm) and 8" (200 mm) diameters
- Several pockets can be combined to create larger pockets as needed

### Installation

1. All penetrations must be a minimum of 1" (25 mm) from the pourable sealer pocket.
2. Securement is required for pockets greater than 18" (450 mm) in diameter. Refer to specifications.
3. Pourable Sealer to be minimum 2" (50 mm) deep.
4. See appropriate installation guide. Refer to WeatherBond WBRC-16.1 detail.
5. Pockets can be stacked two high if necessary to achieve greater height.
6. The entire surface where the P&S Pourable Sealer Pocket and sealant will be applied must be clean. The adhesive on the back of the P&S Pourable Sealer Pocket and the sealer will not adhere to dusted or dirty surfaces. Any residual contamination will be detrimental to the bond strength of the adhesive and sealer.

7. Remove all foreign material.
  - a. Remove excess mica dust by brooming or wiping with a clean, dry rag or splice wipe.
  - b. Clean all mating surfaces with Weathered Membrane Cleaner and allow to dry.

Note: Permeation-resistant gloves (that meet ANSI/ISEA 105-2005) are required for hand protection when cleaners or primers are being used.
  - c. Allow the membrane to dry thoroughly before proceeding.
8. Application of Multi-Purpose or Low VOC EPDM Primer
  - a. Standard Membrane - Apply the primer with a clean splice wipe (or equivalent). Scrub the area of the membrane (where the P&S Pourable Sealer Pocket is to be applied) in a circular motion to achieve a thin, even coating on the membrane. The properly cleaned/primed area will be uniform in color without streaks and free of globs or puddles.
  - b. No Dust Membrane - Roller-apply the primer to the membrane with a short nap-length paint roller. The coated area will be free of globs or puddles.

**Prime all surfaces with EPDM Primer, including the deck membrane, penetration and uncured EPDM flashing that will come in contact with the Pourable Sealer. Primer should not be applied to the blue plastic strip that forms the inside wall of the Pourable Sealer Pocket.**

Note: The use of excessive amounts of primer will not significantly enhance the adhesion of the P&S Pourable Sealer Pocket to the EPDM membrane. Use only the amount necessary to obtain 100% coverage of the area where the P&S Pourable Sealer Pocket will be applied.

9. Allow the primer to flash-off until it does not transfer to a dry finger touch. Install the P&S Pourable Sealer Pocket as soon as the primer flashes off to minimize potential dust contamination and promote adhesion in colder weather.
10. Fill the pocket with either One Part Pourable Sealer or properly mixed Two Part Pourable Sealer and crown the surface to prevent ponded water.

REVIEW CURRENT WEATHERBOND INSTALLATION INSTRUCTIONS FOR SPECIFIC INSTALLATION REQUIREMENTS.

### Precautions

1. Jobsite storage temperatures in excess of 90°F (32°C) may affect product shelf life.
2. Do not use where the maximum temperature will exceed 180°F (82°C).

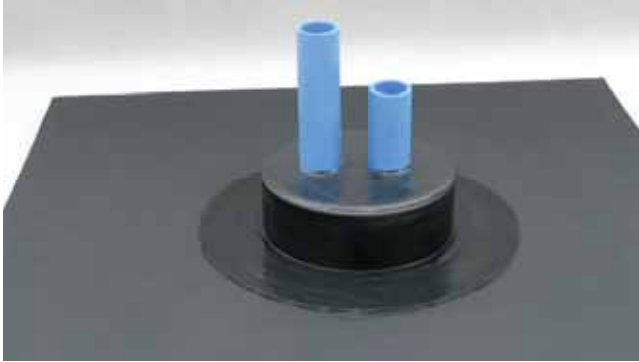


**WEATHERBOND**  
ROOFING SYSTEMS

Single-Ply Simplified

## LEED® Information

Pre-consumer Recycled Content	2%
Post-consumer Recycled Content	0%
Manufacturing Location	Greenville, IL
Solar Reflectance Index (SRI)	N/A



## Typical Properties and Characteristics

Material Color	Black
Size/Weight	4" – 5 lbs/carton of 12 pcs (2.25 kg) 6" – 7 lbs/carton of 12 pcs (3.2 kg) 8" – 9 lbs/carton of 12 pcs (4.1 kg)
Shelf Life	9 months when stored between 60°–80°F (15°–26°C)

WeatherBond P&S Pourable Sealer Pockets meets or exceeds the minimum requirements set forth by ASTM D4811 for a Type 1 (EPDM), Class V (cures on the roof) flashing material.

Typical properties and characteristics are based on samples tested and are not guaranteed for all samples of this product. This data and information is intended as a guide and does not reflect the specification range for any particular property of this product.



**WEATHERBOND**  
ROOFING SYSTEMS

Single-Ply Simplified

P.O. Box 251 | Plainfield, PA 17081 | 866.471.5125 | FAX: 717.960.4034 | [www.weatherbondroofing.com](http://www.weatherbondroofing.com)

© 2017 WeatherBond. 10.09.17  
WeatherBond is a trademark of WeatherBond.