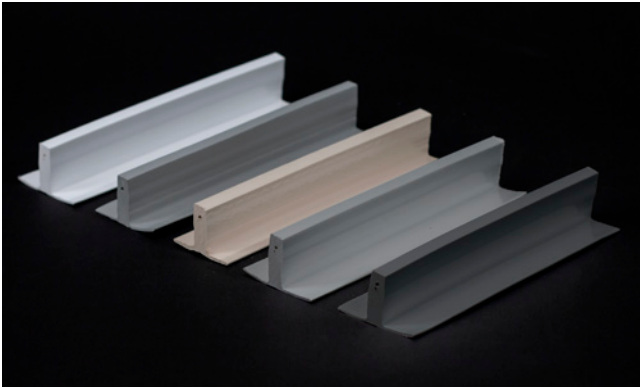


WeatherBond PVC

Rib Profile



Overview

Obtain the look of standing seam metal roofing with the performance of a PVC single-ply membrane with the WeatherBond PVC Rib Profile. This profile is extruded from the same weather-resistant PVC compound as the membrane. The WeatherBond PVC Rib Profile is secured to the PVC roofing membrane to simulate a standing seam metal roofing system. The physical dimensional stability of the profile is enhanced with fiberglass and the rectangular profile provides exceptional shadow lines for aesthetic appeal. Available in White, Gray, Tan, Light Gray and Slate Gray.

The WeatherBond PVC Rib Profile measures 1¼" tall and 2½" wide including the welding flanges while the vertical profile is a substantial ¾" thick. The profile has an ⅛" alignment hole as well as an ⅛" fiberglass reinforcing cord. The WeatherBond PVC Rib Profile is available in 10' lengths packaged 20 per carton. Twenty-five (25) connecting pins are also included in the carton.

Features and Benefits

- Available in white, gray, tan, light gray and slate gray
- Same weatherability as membrane
- Improves aesthetics of sloped roofs
- Zero maintenance
- Lower cost than conventional metal roofing
- Flexible heat-weldable flange allows easy welding of the profile to the roofing membrane
- Fiberglass reinforcement adds dimensional stability
- Low-volatility plasticizer
- Creative installations allow for building design features
- Proper installation does not affect watertight integrity of membrane
- Non-penetrating application

Installation

The WeatherBond PVC Rib Profile is designed for use with Fleece PVC adhered roofing systems, but may also be used with adhered WeatherBond PVC systems. Ensure that all welding surfaces are clean and dry.

Method 1 – Using a standard autowelder and hand welding

Method 2 – Using the Hapco, Inc. Standing Seam Profile Wheel Kit Part Number 107081C2

REVIEW CURRENT WEATHERBOND INSTALLATION INSTRUCTIONS FOR SPECIFIC INSTALLATION REQUIREMENTS.



WEATHERBOND
ROOFING SYSTEMS

Single-Ply Simplified

Precautions

1. Use proper stacking procedures for cartons to ensure sufficient stability.
2. Exercise caution when walking on wet membrane.
3. Sunglasses that filter out ultraviolet light are strongly recommended as the membrane's white surface is highly reflective to sunlight. White surfaces reflect heat and light. Roofing technicians should dress appropriately and wear sunscreen to protect skin from the sun.
4. White surfaces reflect heat and may become slippery due to frost and ice accumulation.
5. Care must be exercised when working close to a roof edge when the surrounding area is snow covered.
6. WeatherBond PVC membrane exposed to the weather must be prepared with WeatherBond PVC Membrane Cleaner prior to hot-air welding.

LEED® Information

Pre-consumer Recycled Content	10%
Post-consumer Recycled Content	0%
Manufacturing Location	Mount Airy, NC

Typical Properties and Characteristics (Per purchasing spec)

Property	Value
Length (inches)	120 ± ¼
Wt/Ln Ft (lb)	0.40
Wt/Piece (lb)	4.2
Height (inches)	1.25 ± 3/100
Width (inches)	2.125 ± 1/25
Pieces/carton	20
Connecting pins/carton	25

Typical properties and characteristics are based on samples tested and are not guaranteed for all samples of this product. This data and information is intended as a guide and does not reflect the specification range for any particular property of this product.



WEATHERBOND
ROOFING SYSTEMS

Single-Ply Simplified

P.O. Box 251 | Plainfield, PA 17081 | 866.471.5125 | FAX: 717.960.4034 | www.weatherbondroofing.com

© 2020 WeatherBond. 12.29.20 WB-4148 - "PVC Rib Profile Technical Data Bulletin"
WeatherBond is a trademark of WeatherBond. LEED is a registered trademark of the U.S. Green Building Council.