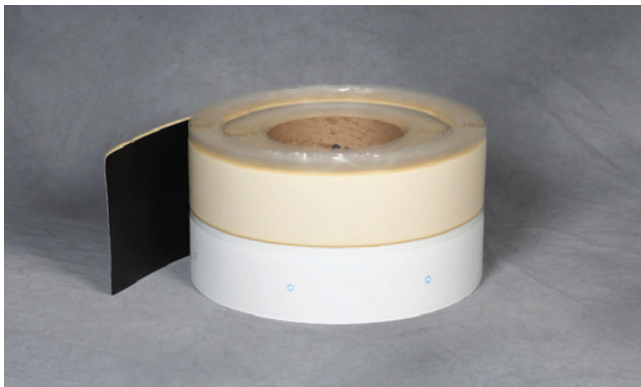
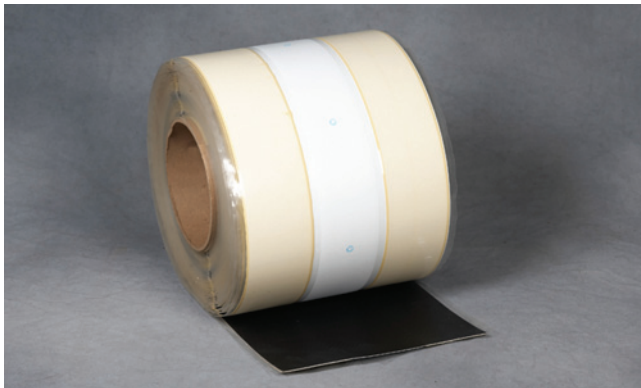


WeatherBond TPO

Pressure-Sensitive RUSS



Overview

Let WeatherBond simplify your next WeatherBond TPO installation with Pressure-Sensitive (PS) RUSS. WeatherBond's PS RUSS is part of the Certified Fabricated Accessory (CFA) program. Certified Fabricated Accessories are the only factory-fabricated TPO accessories that meet the stringent quality tolerances required to be included in a WeatherBond roofing system. PS RUSS is a nominal 45-mil (1.14 mm) thick reinforced TPO membrane strip with a nominal 35-mil (.89 mm) thick cured TPO splice tape adhesive laminated along one or both edges. The reinforced TPO membrane is either 6" (150 mm) or 10" (250 mm) wide while the adhesive strips are 3" (75 mm) wide.

6" Pressure-Sensitive RUSS has splice tape applied along one edge while the 10" Pressure-Sensitive RUSS has splice tape applied along both edges. Both products are installed below the deck membrane and provide securement without penetrating the sheet.



WEATHERBOND
ROOFING SYSTEMS

Single-Ply Simplified

Intended Uses

WeatherBond TPO 10" Pressure-Sensitive RUSS is used in place of narrow-width sheets to secure membrane in the perimeter of the roof. WeatherBond TPO 6" Pressure-Sensitive RUSS is used to secure membrane at the base of an angle change eliminating the need to use a separate wall flashing.

Features and Benefits

6" PS RUSS

- Eliminates penetrations through the sheet at the base of a vertical wall or curb
- Eliminates the need for a separate wall flashing
- Eliminates the difficult task of welding tight against a vertical wall

10" PS RUSS

- Simplifies perimeter securement
- Eliminates the need for narrow-width perimeter sheets
- Ideal for membrane securement on a metal retrofit system

Installation: 6" PS RUSS

1. Unroll and position TPO 6" PS RUSS horizontally at the base of a parapet wall or curb. Locate the tab with fastener markings toward the wall and the pre-applied tape toward the field of the roof facing upwards.
2. Position HPWX Plates $\frac{1}{8}$ " to $\frac{3}{4}$ " (3 to 19 mm) from the angle change and 12" (300 mm) on center maximum and secure with HPWX or HPWX-XL Fasteners. Do not fasten plates over top of the release liner as this will cause the liner to tear when removed. WeatherBond recommends that the RUSS be fastened on the horizontal. In a case where fasteners must be located on the vertical surface, care must be taken to create the RUSS as well as the membrane tightly into the angle change to maximize contact between the tape and membrane. Membrane must be adhered to the full width of the tape. Placing the plates tight into the angle change will help hold the RUSS in the proper position.
3. Remove any dirt or dust resulting from plate installation. Any residual dust/dirt will be detrimental to the bond strength of the tape adhesive.
4. Position deck membrane and thoroughly clean the underside of the deck membrane using Weathered Membrane Cleaner if necessary. (The entire surface of the membrane where the tape is to contact must be clean. The adhesive on the TPO 6" PS RUSS will not adhere to dusted/dirty surfaces).
5. Roller-apply WeatherBond's TPO Primer to the underside of the deck membrane in the area that will come in contact with the 3"-wide tape. The properly primed area will be uniform in color without streaks and free from globs or puddles.
6. Remove the release liner from the adhesive tape on the TPO 6" PS RUSS pulling it parallel to the roof deck.

- Roll the deck membrane onto the exposed adhesive tape and apply hand pressure to the splice area.
- Pull the membrane back to expose the unadhered portion of the TPO 6" PS RUSS. Apply WeatherBond TPO Bonding Adhesive or TPO Low-VOC Bonding Adhesive to the underside of the deck membrane, exposed TPO 6" PS RUSS and parapet wall.
- Once the adhesive has dried, roll membrane to the angle change and crease. (Take extra care in creasing TPO membrane into the angle change to achieve desirable appearance). Roll the membrane up the wall and broom for 100% adhesion.
- Roll the entire 6" (150 mm) width of the TPO 6" PS RUSS splice area with a 2" (50 mm)-wide roller using positive pressure.
- To achieve proper adhesion of the TPO 6" PS RUSS when jobsite temperatures fall below 40°F (5°C), heat the cleaned, primed area with a hot-air gun as the membrane is applied and pressed into place.

Installation: 10" PS RUSS

- Unroll and position the TPO 10" PS RUSS over the insulation substrate where membrane securement is desired. Locate the RUSS with the fastener markings and tape facing upwards.
- Position HPWX Plates 12" (300 mm) on center maximum and secure with an HPWX or HPW-XL fastener. Do not fasten plates over top of the release liner as this will cause the liner to tear when removed.
- Remove any dirt or dust resulting from plate installation. Any residual dust/dirt will be detrimental to the bond strength of the tape adhesive.
- Position deck membrane and thoroughly clean the tape contact area using Weathered Membrane Cleaner if necessary. (The entire membrane surface where the tape is to contact must be clean. The adhesive on the TPO 10" PS RUSS will not adhere to dusted/dirty surfaces).
- Roller-apply TPO Primer to the underside of the deck membrane in the area that will come in contact with the 3"-wide tape. The properly primed area will be uniform in color without streaks and free from globs or puddles.
- Remove the release liner from the tape on the TPO 10" PS RUSS pulling it parallel to the roof deck.
- Once the TPO Primer has dried to the touch, roll the deck membrane onto the exposed tape and apply hand pressure to the splice area.
- Roll the entire 10" (250 mm) width of the TPO PS RUSS splice area with a 2" (50 mm)-wide roller using positive pressure.
- To achieve proper adhesion of the TPO PS RUSS when jobsite temperatures fall below 40°F (5°C), heat the cleaned/primed area of the membrane with a hot-air gun as it is applied and pressed into the tape.

REVIEW CURRENT WEATHERBOND INSTALLATION INSTRUCTIONS FOR SPECIFIC INSTALLATION REQUIREMENTS.



WEATHERBOND
ROOFING SYSTEMS

Single-Ply Simplified

Precautions

- WeatherBond recommends that the TPO 6" PS RUSS be installed and fastened onto only horizontal surfaces. See "Installation" section for cautions when fastening this product on a vertical surface.
- WeatherBond HPWX or HPW-XL Plates and Fasteners must be used when installing TPO PS RUSS.
- TPO PS RUSS must be stored in a dry area.
- Review the applicable Safety Data Sheet for complete safety information prior to use.
- Due to solvent flash-off, condensation may form on freshly applied TPO Primer when the ambient temperature is near the dew point. If condensation develops, the application of primer and installation of TPO PS RUSS must be discontinued as proper adhesion will not be achieved. Allow the primer surface to dry and apply a thin freshener coat of TPO Primer to the previously coated surface when conditions allow.
- Jobsite storage temperatures in excess of 90°F (32°C) may affect product shelf life. Prolonged jobsite exposure to temperatures below 40°F (4°C) will cause the tape adhesive to lose tack and in extreme cases not bond to the membrane. If this situation is encountered, remove TPO PS RUSS to a warm area and allow it to return to a minimum of 60°F (15°C).
- KEEP OUT OF THE REACH OF CHILDREN.

Typical Properties and Characteristics

Property	Test Method
Base	Membrane-TPO (Polyester reinforced) Adhesive-Synthetic Rubber
Thickness	Membrane 0.045" (1.14 mm) Adhesive 0.030" (0.76 mm)
Size	6" RUSS: 6" x 100' (150 mm x 30.5 m) 10" RUSS: 10" x 100' (250 mm x 30 m)
Packaging	6" RUSS: 200 lf/ctn (60 m) - 2 rolls 10" RUSS: 100 lf/ctn (30 m) - 1 roll
Weight/Carton	6" RUSS: 40 lbs (18.1 kg) 10" RUSS: 32 lbs (14.5 kg)
Shelf Life	1 Year

Typical properties and characteristics are based on samples tested and are not guaranteed for all samples of this product. This data and information is intended as a guide and does not reflect the specification range for any particular property of this product.