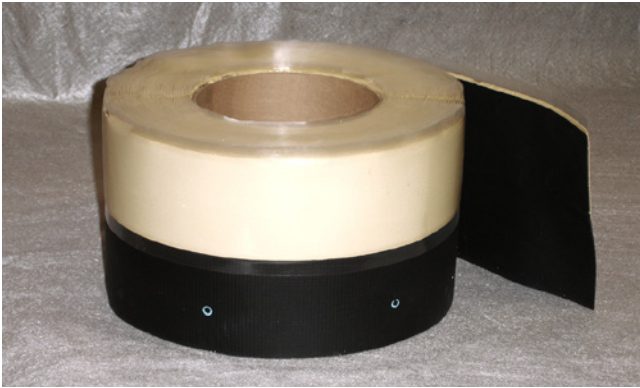


# WeatherBond **EPDM**

## White Peel & Stick Reinforced Perimeter Strip (RPS)



### Overview

WeatherBond Roofing Systems' White EPDM Peel & Stick Reinforced Perimeter Strip (RPS) is a nominal 45-mil (1.14 mm) thick reinforced EPDM membrane strip with a nominal 30-mil (.76 mm) thick cured EPDM splice tape laminated along one edge. The reinforced EPDM membrane is 6" (150 mm) wide while the adhesive strip is 3" (75 mm) wide.

Six-inch Peel & Stick (RPS) has the splice tape pre-applied along one edge, and can be installed horizontally or vertically in conjunction with Seam Fastening Plates below the EPDM deck membrane for additional membrane securement.

WeatherBond's White EPDM Peel & Stick RPS can be used on WeatherBond White EPDM fully adhered roofing systems at locations such as walls, curbs, and expansion joints.

### Features and Benefits

- Ideal for additional membrane securement as needed
- Ideal for securement around penetrations
- Ideal for perimeter securement

### Installation: Parapet Wall (6" Peel & Stick RPS)

1. Unroll and position Peel & Stick RPS horizontally or vertically in the angle change with the pre-applied tape laying horizontally and facing up.
2. Position Seam Fastening Plates  $\frac{1}{8}$ " to  $\frac{3}{4}$ " (3 to 19 mm) from the angle change, 12" (300 mm) on center maximum and secure with a WeatherBond fastener. Do not fasten plates over top of release liner, as this will cause liner to tear when removed.
3. The entire EPDM membrane surface where the RPS will be applied must be cleaned and primed. The adhesive on the back of the Peel & Stick RPS will not adhere to dusted/dirty surfaces. Remove any dirt or dust resulting from plate installation by wiping with a clean rag. If there is a heavy layer of dirt present, clean the splice area thoroughly with Weathered Membrane Cleaner. Any residual dust/dirt will be detrimental to the bond strength of the tape adhesive.
4. Application of EPDM Primer: WeatherBond White EPDM – Roller-apply the primer to the area of the membrane where the RPS Strip will be applied with a short nap-length paint roller. The coated area will be free of globs or puddles.
5. Allow the EPDM Primer to dry until it does not transfer to a dry finger touch.
6. Install RPS Strip immediately after EPDM Primer flashes off to minimize potential dust contamination and promote adhesion in colder weather.
7. Remove the release liner from the adhesive on the Peel & Stick RPS, pulling it parallel to the roof deck.
8. Roll the deck membrane onto the exposed adhesive and apply hand pressure to the splice area.
9. Pull the membrane back to expose the unadhered portion of the Peel & Stick RPS. Apply Bonding Adhesive to the deck membrane, exposed Peel & Stick RPS and parapet wall.
10. Once the adhesive has dried, roll membrane to the angle change and crease. Roll the membrane up the wall and broom for 100% adhesion.
11. Roll the entire 6" (150 mm) width of the Peel & Stick RPS splice area with a 2" (50 mm)-wide steel roller using positive pressure.

REVIEW CURRENT WEATHERBOND INSTALLATION INSTRUCTIONS FOR SPECIFIC INSTALLATION REQUIREMENTS.



**WEATHERBOND**  
ROOFING SYSTEMS

Single-Ply Simplified

## Precautions

1. Avoid prolonged contact with skin. In case of contact with skin, thoroughly wash affected area with soap and water.
2. Prolonged jobsite storage temperatures in excess of 90°F (32°C) may affect product shelf life.
3. In warm, sunny weather, keep Peel & Stick RPS in the box or in a shaded area until ready to use.
4. Storage and use of Peel & Stick RPS at temperatures below 40°F (4°C) will result in a loss of adhesive tack, and in extreme cases, will result in no bond to the substrate. Overnight storage must be available to keep the temperature of the Peel & Stick RPS at a minimum of 60°F (15°C). Hot boxes for jobsite storage must be provided to maintain a minimum product temperature of 40°F (4°C).
5. Peel & Stick RPS must be stored in a dry area.
6. Due to solvent flash-off, condensation may form on freshly applied primer when the ambient temperature is near the dew point. If condensation develops, the application of primer and installation of RPS must be discontinued, as proper adhesion will not be achieved. Allow the primer surface to dry and apply a thin freshener coat of primer to the previously coated surface when conditions allow.
7. Seam Fastening Plates and WeatherBond Fasteners must be used when installing Peel & Stick RPS.
8. White Peel & Stick RPS is specifically manufactured for use with WeatherBond White EPDM membrane.
9. In order to achieve proper adhesion, the following steps must be followed when installing Peel & Stick RPS at temperatures below 40°F (5°C).
  - a. After the primer has been applied and allowed to dry properly, install the membrane over the RPS. Heat the top of the membrane directly over the tape with a hot-air gun and immediately roll with a hand roller. The heated surface should be very hot to the touch of bare skin. Take care not to burn or blister the membrane.
10. KEEP OUT OF THE REACH OF CHILDREN.

## Typical Properties and Characteristics

Roll Size	6" x 100' (150 mm x 30.5 mm)
Thickness –Membrane –Adhesive	45-mil (1.14 mm) 28-mil (0.71 mm)
Packaging	200 lf./ctn. (60 m) 2 rolls
Net Wt. Per Carton	38 lbs (17.2 kg)
Shelf Life	1 Year

Typical properties and characteristics are based on samples tested and are not guaranteed for all samples of this product. This data and information is intended as a guide and does not reflect the specification range for any particular property of this product.



**WEATHERBOND**  
ROOFING SYSTEMS

Single-Ply Simplified

P.O. Box 251 | Plainfield, PA 17081 | 866.471.5125 | FAX: 717.960.4034 | [www.weatherbondroofing.com](http://www.weatherbondroofing.com)

© 2022 WeatherBond. 02.24.22 WB-4917 - "White Peel & Stick Reinforced Perimeter Strip (RPS) Technical Data Bulletin"  
WeatherBond is a trademark of WeatherBond.