

WeatherBond

Rubber Pavers



Overview

Rubber Pavers are designed to meet WeatherBond's demanding specifications for a roof paver. These pavers are 2' x 2' x 2" thick and weigh 6 lb/ft². The pavers consist of 90% pre-consumer recycled content, providing an environmentally friendly product that provides superior protection of underlying roof membranes. WeatherBond Pavers can be used as part of the Interlocking Rubber Paver System (see below) or to protect the membrane on single-ply roofing systems.

Features and Benefits

- Rubber Pavers are compatible with all membranes and lock together to provide multi-directional drainage patterns eliminating the necessity of protective mats
- These rooftop pavers feature a resilient, shock-absorbing, weather-resistant traffic surface

Installation

1. Before application of the paver system, the insulation and membrane are loose-laid over the substrate and the membrane sheets are spliced together with WeatherBond primer and WeatherBond Peel & Stick Seam Tape.
2. The pavers are loose-laid and interlocked over the membrane. Depending upon the system, an adhesive for pavers is used in the locking portions of the pavers. Refer to WeatherBond specs and details for further information.

REVIEW CURRENT WEATHERBOND INSTALLATION INSTRUCTIONS FOR SPECIFIC INSTALLATION REQUIREMENTS.



WEATHERBOND
ROOFING SYSTEMS

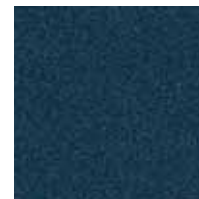
Precautions

1. Rubber Pavers are not recommended in areas that may be exposed to point loading of small, narrow points, such as chairs with narrow legs or high-heeled shoes.
2. The Plus Series is not recommended for occupied buildings where foot traffic may be present as possible tracking of the rubber surface may occur over time.

Plus Series



Black



Blue



Brown



Gray

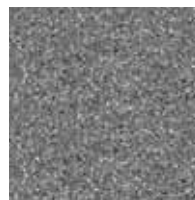


Green

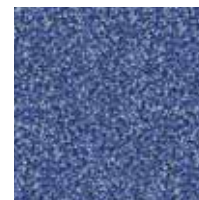


Terra Cotta

Premium Series



Bedrock



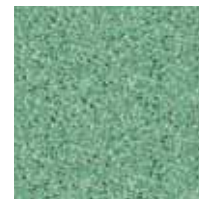
Blue Ice



Coral Clay



Fire Brick



Green Slate



Multi Grain



Roasted Pepper



Sandy Lane



Spring Meadow

LEED® Information

Pre-consumer Recycled Content	90%
Post-consumer Recycled Content	93%
Manufacturing Location	Petrolia, Canada
Solar Reflectance Index (SRI)	N/A

Typical Properties and Characteristics

Property	Test Method	Result
Dimensions @ 78° (26°C)	—	24" x 24" ± ¼"
Weight	—	6 lb/ft ²
Water Surface Density	ASTM D3676	66 lb/ft ³
Coefficient of Thermal Expansion	—	1.10 x 10 ⁻³ in/ft/°F
Tensile Strength	ASTM D412	107 psi
Elongation at Break	ASTM D412	165%
Tear Resistance	ASTM D624	33 lb/in
Abrasion Testing, Taber Abrader, 1000 g. wt., 2000 cycles, H-21 wheel	ASTM D3389	.75 g. loss
Resistance to Outdoor Ultraviolet Weathering	Xenon Arc, 500 hrs. exposure, 178°F (81°C), 50% relative humidity	85% tensile retention 100% elongation retention
Burning Pill Test	ASTM D2859	Pass
Freeze/Thaw Cycling	ASTM C67	No Deterioration

Typical properties and characteristics are based on samples tested and are not guaranteed for all samples of this product. This data and information is intended as a guide and does not reflect the specification range for any particular property of this product.



WEATHERBOND
ROOFING SYSTEMS

Single-Ply Simplified

P.O. Box 251 | Plainfield, PA 17081 | 866.471.5125 | FAX: 717.960.4034 | www.weatherbondroofing.com

© 2017 WeatherBond. 10.27.17
WeatherBond is a trademark of WeatherBond. LEED is a registered trademark of the U.S. Green Building Council.