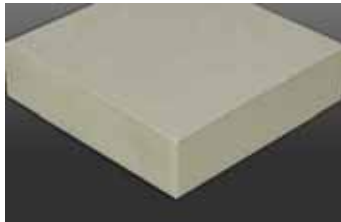


WeatherBond Polyiso

A ready reference guide for ordering insulation for your next job.



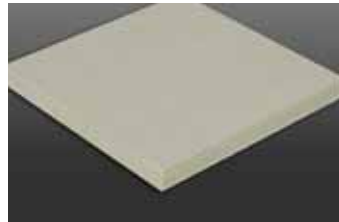
XFP Polyiso

A rigid roof insulation panel composed of a closed-cell polyisocyanurate foam core bonded to high performance coated glass facers (CGF). Ideal for use in adhered membrane systems.

Sizes: 4' x 4' and 4' x 8'

Thickness: ½" to 4 ½"

Compressive Strength: 20 and 25 psi



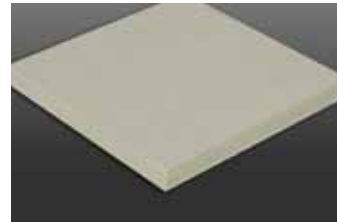
XFP HD

A rigid roof insulation panel composed of ½" high-density, closed-cell polyisocyanurate foam core bonded to a premium performance coated glass facer (CGF) specifically designed for use as a cover board. Provides 5 times the R-value at one-fifth the weight of traditional gypsum cover boards. 1" board achieves UL Class A fire rating over combustible decks

Sizes: 4' x 4' and 4' x 8'

Thickness: ½"

Compressive Strength: 109 psi max



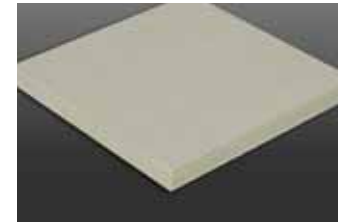
XFP HD Plus

A rigid roof insulation panel composed of a ½" high-density, closed-cell polyisocyanurate foam core bonded to a premium performance coated glass facer (CGF) specifically designed for use as a cover board. Enhanced performance of the HD Plus product provides a FM 1-90 wind uplift rating with only 8 fasteners.

Sizes: 4' x 4' and 4' x 8'

Thickness: ½"

Compressive Strength: 109 psi max



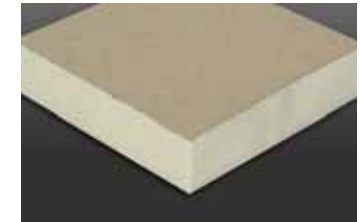
XFP HD FR

A rigid roof insulation panel composed of a ½" high-density, closed-cell polyisocyanurate foam core bonded to coated glass facers (CGF) providing a UL Class A fire rating when applied directly to combustible decks.

Sizes: 4' x 4' and 4' x 8'

Thickness: ½"

Compressive Strength: 109 psi max



XP Polyiso

A rigid roof insulation panel composed of closed-cell polyisocyanurate foam core bonded to glass-reinforced felt (GRF) facers. UL and FM approved for direct application over steel decks, polyiso provides the highest R-value per inch of any commercially available insulation product.

Sizes: 4' x 4' and 4' x 8'

Thickness: ½" to 4 ½"

Compressive Strength: 20 and 25 psi



XP-NB Polyiso

A rigid roof insulation composite panel composed of closed-cell polyisocyanurate foam core bonded to a glass-reinforced felt (GRF) facer on one side and ¾" oriented strand board (OSB) on the other.

Sizes: 4' x 4' (routed 3 sides) and 4' x 8' (routed 4 sides)

Thickness: 1 ½" to 4 ½"

Typical Thickness: 1 ½", 2", 2 ½", 3", and 4"



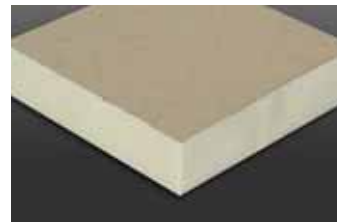
XFP HD Composite

A unique composite insulation panel comprised of ½" high-density polyiso cover board bonded during the manufacturing process to XFP rigid Polyiso roof insulation. Eliminates the need for a separate cover board, reduces inter-ply adhesives and saves labor on the roof. A single product solution.

Sizes: 4' x 4' and 4' x 8'

Thickness: 1 ½" to 4 ½"

Compressive Strength: 20psi (SecurShield base layer) and 109psi max (Securshield HD cover board)

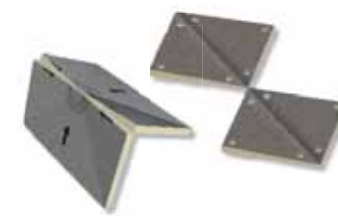


Tapered Polyiso

A sloped rigid roof insulation panel composed of closed cell polyisocyanurate foam core bonded to a coated glass or fiber-reinforced facer. Designed to promote positive drainage and prevent ponding water.

Sizes: 4' x 4' and 4' x 8'

Compressive Strength: 25 psi



Tapered Accessories

Hinged Target Sumps and Pre-Cut Hips and Valleys ship ready to install, require no field cuts and save valuable time on the roof. Multiple thicknesses and slopes available to accommodate specific job conditions with no waste, thus reducing disposal fees.

Sizes: 4' x 4' (Hip/Valley) and 8' x 8' (Sump)

Thickness: As required by job

Slope: As required by job



R-Tech® Fanfold Recover Board

A high-performance, rigid insulation consisting of a superior closed-cell, lightweight and resilient expanded polystyrene (EPS) with advanced polymeric laminate facers. R-Tech is available with factory-adhered metallic-reflective facers and white facers. R-Tech Fanfold Recover Board is an ENERGY STAR®-qualified insulation and can contribute toward LEED® certification credits.

Sizes: 2 square bundles (2' x 4' folded/4' x 50' unfolded)

Thickness: ¾", ¾", ¾", ¾"



WEATHERBOND
ROOFING SYSTEMS

Single-Ply Simplified

P.O. Box 251 | Plainfield, PA 17081 | 866.471.5125 | FAX: 717.960.4034 | www.weatherbondroofing.com

© 2019 WeatherBond. 05.10.19 REPRINT REQUEST CODE: 609505 - "Insulation Quick Reference Sheet"

WeatherBond is a trademark of WeatherBond. R-Tech is a trademark of Insulfoam. ENERGY STAR is a registered trademark of the US government. LEED is a registered trademark of the U.S. Green Building Council.