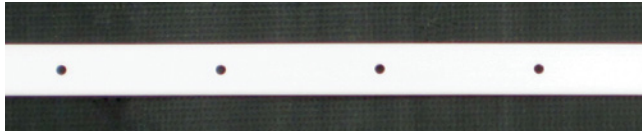


# WeatherBond

## Fastening and Termination Bars



### Polymer Batten Strip

The Polymer Batten Strip is an engineered polymer bar that is used to mechanically attach EPDM membranes per WeatherBond Installation Instructions. The bar is packaged in a 1" x 250' coil that has pre-punched holes every 3" on center. The strip can be easily cut to any desired length. When installing, make sure that all corners of cut strip are rounded. Install the strip using HPW or HPWX Fasteners.

### Typical Properties and Characteristics

Material	Engineered Polymer
Dimensions	1" (25 mm) wide x 250' (76 m) long
Packaging	250 lf (76 m) per carton
Weight	10 lbs (5 kg) carton
Recycled Content	0% pre-consumer recycled content
Manufacturing Location	Addison, IL



### Termination Bar

The Termination Bar is an extruded aluminum bar that is designed for securing and sealing compression type flashing terminations per WeatherBond Installation Instructions. The bar is packaged in 1" x 10' lengths, 250 linear feet per package and has pre-punched holes every 6" on center. This bar features a top edge for ease of applying WeatherBond's Lap Sealant for EPDM installations or Universal Single Ply Sealant for TPO, PVC, and KEE HP installations. The bar can be easily cut to any desired length. When installing, make sure that all corners of cut bar are rounded. Install the bar using HPWX Fasteners, or Term-Bar Nail-In Fasteners.

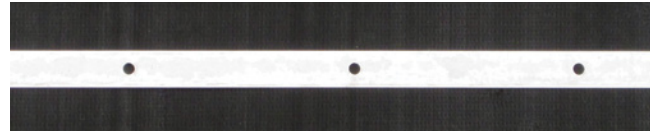
### Typical Properties and Characteristics

Material	6036-T6 Extruded Aluminum
Dimensions	1" (25 mm) wide x 10' (3 m) long
Packaging	25 pcs; 250 lf (76 m) per carton
Weight	40 lbs (18 kg) carton
Recycled Content	0% pre-consumer recycled content 15% post-consumer recycled content
Manufacturing Location	Cleveland, OH



**WEATHERBOND**  
ROOFING SYSTEMS

**Single-Ply Simplified**



### Metal Fastening Bar

The Metal Fastening Bar is a Galvalume™ coated metal that is used to mechanically attach EPDM membranes per WeatherBond Installation Instructions. The bar is packaged in 1" x 10' lengths, 500 linear feet per package and has pre-punched holes every 6" on center. The bar can be easily cut to any desired length. When installing, make sure that all corners of cut bar are rounded. Install the bar using HPWX Fasteners.

### Typical Properties and Characteristics

Material	Galvalume Coated Metal
Dimensions	1" (102 mm) wide x 10' (3 m) long
Packaging	50 pcs; 500 lf (152 m) per carton
Weight	85 lbs (39 kg) carton
Recycled Content	49% pre-consumer recycled content
Manufacturing Location	Cleveland, OH



### Ballast Retaining Bar

The Ballast Retaining Bar is an extruded aluminum bar that is designed as a ballast retaining perimeter securement system, which comes packaged in 4" x 10' lengths, 250 linear feet per package. The ballast retaining bar has pre-punched holes every 6" on center for installation, and also has pre-punched drainage holes every 4" on center.

### Typical Properties and Characteristics

Material	6036-T6 Extruded Aluminum
Dimensions	4" (102 mm) wide x 10' (3 m) long
Packaging	25 pcs; 250 lf (76 m) per carton
Weight	123 lbs (56 kg) carton

1285 Ritner Highway | Carlisle, PA 17013 | 866.471.5125 | FAX: 717.960.4034 | [www.weatherbondroofing.com](http://www.weatherbondroofing.com)

© 2025 WeatherBond. 10.17.25 WB-8224 - "Fastening and Termination Bars Technical Data Bulletin"  
WeatherBond is a trademark of WeatherBond. Galvalume is an internationally recognized trademark of BIEC International Inc., and some of its licensed producers.