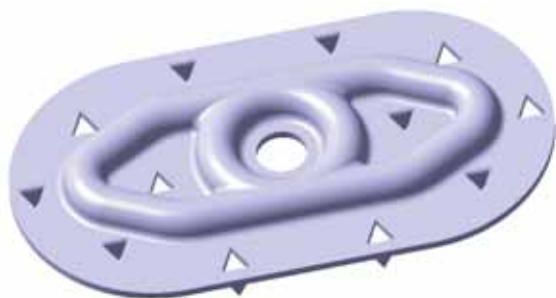


WeatherBond

1.5" x 2.75" Oval Barbed Plate



Overview

The 1.5" x 2.75" Oval Barbed Plate is for use with all WeatherBond PVC and KEE HP polyester-reinforced membranes. These plates are designed for use in mechanically attached PVC and KEE HP roofing systems, offering greater wind uplift resistance allowing higher wind speed approvals. In-house testing showed that the elongated edge of the oval plate better distributes the stress along the seam and improves splice delamination strength, resulting in higher wind uplift ratings.

Features and Benefits

- 12 barbs for additional slip resistance
- 18-gauge corrosion resistant Galvalume® steel
- Pull-through strength of over 700 lbs (3.11 kN)

Installation

Care must be taken to ensure that the longer edge of the oval plate is positioned parallel to the edge of the membrane, approximately three quarters of an inch ($\frac{3}{4}$ ") from the edge. The plate must be secured to the deck by installing WeatherBond HPWX fasteners through the center hole with a standard clutch drive electric screw gun (0–2500 rpm). Use care to avoid over-driving the fastener during installation. Optimum fastener and plate performance is achieved when the fastener is installed perpendicular to the deck and into the top flutes of a steel deck. The oval plate can be used with standard WeatherBond or WeatherBond KEE HP polyester-reinforced PVC membranes.

REVIEW CURRENT WEATHERBOND INSTALLATION INSTRUCTIONS FOR SPECIFIC INSTALLATION REQUIREMENTS.

Precautions

1. Eye protection is recommended during installation.
2. Use care to avoid over-torquing the fastener.

Typical Properties and Characteristics

Part Number	319985
Application	Roof cover to roof deck (metal, wood or concrete)
Thickness	18 gauge
Hole Diameter	0.250"
Length	2.750"
Width	1.500"
Pcs/Pail	500
Pail Weight	33.75 lb (15.31 kg)
Pails/Skid	40
Pull-Through Strength	700 lb (3.11 kN) minimum
Corrosion Resistance	15/15 Kesternich, per FM 4470

Typical properties and characteristics are based on samples tested and are not guaranteed for all samples of this product. This data and information is intended as a guide and does not reflect the specification range for any particular property of this product.


WEATHERBOND
ROOFING SYSTEMS
Single-Ply Simplified

P.O. Box 251 | Plainfield, PA 17081 | 866.471.5125 | FAX: 717.960.4034 | www.weatherbondroofing.com

© 2017 WeatherBond. 09.26.17
WeatherBond is a trademark of WeatherBond.
Galvalume is an internationally recognized trademark of BIEC International Inc., and some of its licensed producers.