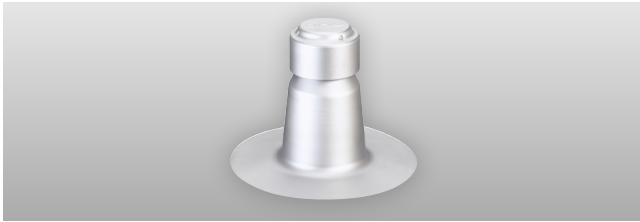


WeatherBond

One- and Two-Way Pressure Relief Breather Vents

Non-Weldable Pressure Relief Breather Vents



Overview

WeatherBond's Non-Weldable One- and Two-Way Pressure Relief Breather Vents are engineered to reduce moisture within the roofing system and release trapped air pressure within the building. One-Way Vents allow trapped air pressure to escape; Two-Way Vents (combined with One-Way Vents) help to reduce moisture.

Features and Benefits

- Made from heavy-gauge spun aluminum for strength and durability
- Conical shape and wide base opening allow for better performance and easier installation than cylindrical vents
- Vandal-proof cap keeps rain and snow out

Installation

Consult WeatherBond for project-specific spacing requirements. Cut a 5"-diameter opening through membrane and insulating material, remove membrane and material to vapor barrier or deck, and attach vent to roof deck with appropriate fasteners. Flash in accordance with WeatherBond Specifications and Details.

REVIEW CURRENT WEATHERBOND INSTALLATION INSTRUCTIONS FOR SPECIFIC INSTALLATION REQUIREMENTS.

Typical Properties and Characteristics

Sizes	Height: 8" Base Diameter: 11" Stack Diameter at Base: 5" Net Free Area: N/A
Packaging	25/box
Weight	One-Way - 22 lbs/box (.88 lbs/vent) Two-Way - 20 lbs/box (.90 lbs/vent)
Material	.051 Aluminum
Product Codes	327975 – One-Way Pressure Relief Vent 327976 – Two-Way Pressure Relief Vent

Typical properties and characteristics are based on samples tested and are not guaranteed for all samples of this product. This data and information is intended as a guide and does not reflect the specification range for any particular property of this product.



WEATHERBOND
ROOFING SYSTEMS

Single-Ply Simplified

Weldable Pressure-Relief Breather Vents



Overview

Available in both TPO and PVC, WeatherBond's Weldable One- and Two-Way Pressure Relief Breather Vents are engineered to reduce moisture within the roofing system and release trapped air pressure within the building. One-Way Vents allow trapped air pressure to escape; Two-Way Vents (combined with One-Way Vents) help to reduce moisture.

Features and Benefits

- Quick and simple installation with no stretching required
- Provides a consistent, finished appearance
- Vandal-proof cap keeps rain and snow out

Installation

1. Consult WeatherBond for project-specific spacing requirements. Cut a 4" diameter opening through membrane and insulating material, remove membrane and material to vapor barrier or deck.
2. Heat-weld the base flange to the deck membrane.
3. Once the flashing has completely cooled, check all splices for voids and cold welds. Make any needed repairs.

REVIEW CURRENT WEATHERBOND INSTALLATION INSTRUCTIONS FOR SPECIFIC INSTALLATION REQUIREMENTS.

Typical Properties and Characteristics

Sizes	Height: 9" Base Diameter: 12" Stack Diameter at Base: 4.25" Net Free Area: N/A
Packaging	12/box
Weight	21 lbs/box (1.75 lbs/vent)
Material	Stack Material: Molded Thermoplastic with .060 Weldable Membrane Flange Vent Cap: PVC
Product Codes	334849 – TPO One-Way Vent 335592 – PVC One-Way Vent 334880 – TPO Two-Way Vent 335593 – PVC Two-Way Vent

Typical properties and characteristics are based on samples tested and are not guaranteed for all samples of this product. This data and information is intended as a guide and does not reflect the specification range for any particular property of this product.