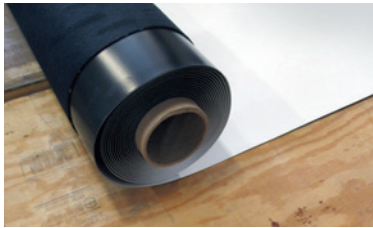


WeatherBond

Labor-Saving Products Quick Reference Guide



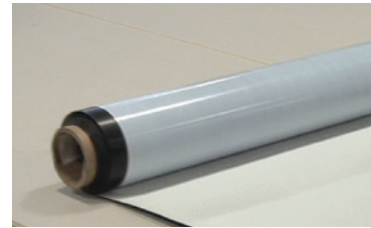
TPO FR Fleece Membrane

TPO FR Fleece Membranes achieve a UL Class A fire rating when fastened directly to combustible decks and can be installed in any temperature. TPO FR Fleece Membrane is chlorine- and plasticizer-free and provides excellent resistance to chemicals, acids, bases, restaurant oils, and greases. Installations are not restricted by ambient temperature limits and TPO FR Fleece Membrane systems have 67% fewer seams than modified bitumen systems.



WeatherBond TPO and PVC with APEEL™ Protective Film

Patented APEEL Protective Film guards the TPO and PVC membrane against scuffs and dirt accumulation during construction and eliminates the need to clean the roof after installation. The durable heat- and UV-resistant film will not splinter during removal; simply remove the film and the roof is ready for final inspection.



Peel & Stick TPO Membrane

Heat-weldable Peel & Stick TPO membrane comes with pre-applied adhesive to help save time, labor, and product. Eliminating the need to apply bonding adhesive and wait for flash-off provides up to 80% labor savings compared to traditional installations.



WeatherBond HydroBond™ Water-Based Adhesive

HydroBond is a water-based, wet lay-in, one-sided dispersion adhesive used with smooth-backed PVC and fleece-backed PVC, KEE HP and TPO membranes. This long-lasting, high-strength adhesive can be quickly and easily applied with a medium nap roller. HydroBond can not be used with bare-backed KEE or KEE HP membranes.



Flexible DASH Dual Tank Adhesive

Flexible DASH Dual Tank Adhesive adheres membranes with superior staying power and reduces membrane application time up to 60% when compared to traditional installations of non-Fleece systems. Self-contained Dual Tank sets include spray tips, guns, nozzle extensions, and hoses in each A-side box. Dual Tanks decrease labor by eliminating equipment maintenance and breakdowns, and application time is reduced up to 15% when compared to low-pressure dispensing machines.



CAV-GRIP™ III and CAV-GRIP PVC Adhesive

This spray gun-applied adhesive requires no stirring or waiting for flash-off, can be used in cold temperatures, is quick to apply, and has a 5-minute set-up time, resulting in up to 60% labor savings when compared to installations using traditional bonding adhesive. **CAV-GRIP III** is an excellent option for adhering standard TPO and EPDM membranes to horizontal and vertical surfaces, adhering Fleece membranes to vertical surfaces, as a primer for VapAir Seal 725TR, and as an unexposed asphalt primer for Flexible DASH. **CAV-GRIP PVC** can be used for a variety of applications: adhering PVC bareback membranes to a variety of horizontal substrates and vertical walls (cannot be used with any KEE or KEE HP bareback membranes), adhering Fleece membranes to vertical walls, as a primer for VapAir Seal 725TR, and as an unexposed asphalt primer for Flexible DASH.



Peel & Stick (PAS) EPDM Membrane with Pre-Applied Seam Tape

WeatherBond's PAS EPDM membrane provides up to 80% labor savings on the rooftop. With its factory applied adhesive the need to load, stir, apply and wait for flash off is eliminated, creating an easy-to-install fully-adhered system. WeatherBond PAS EPDM membrane is also available with pre-applied seam tape.

WeatherBond's labor-saving pre-applied seam tape makes it possible to increase productivity because most of the labor to create seams between membrane panels is completed in a quality controlled, state-of-the-art environment. This process results in a reliable seam with greater peel and shear strengths and with no entrapped air bubbles. Consistent placement of the Pre-Applied Seam Tape also maximizes the splice area and results in a high-quality seam.

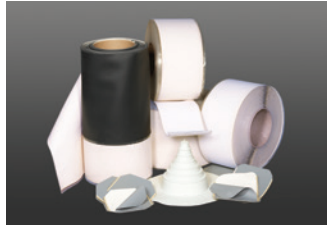


WEATHERBOND
ROOFING SYSTEMS

Single-Ply Simplified

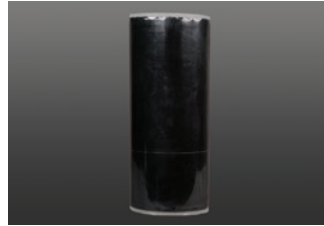
WeatherBond

Labor-Saving Products Quick Reference Guide



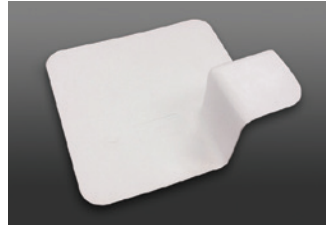
Peel & Stick Accessories

P&S accessories feature pre-applied adhesive which saves time and labor and reduces the likelihood of improper installation. P&S accessories are ideal for installing details on all EPDM Roofing Systems. White P&S accessories can also be used with WeatherBond TPO roofing systems providing substantial labor savings on projects with hard-to-flash penetrations or where the use of a generator and hand welder are not practical.



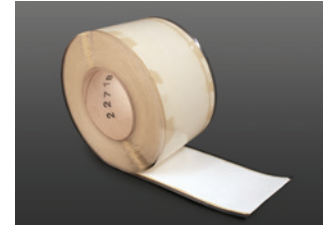
20" Peel & Stick EPDM Cured Flashing

20" Peel & Stick EPDM Cured Flashing features a monolithic 20" of Seam Tape and offers an effective, labor-saving way to flash curbs and pipes. Production time on projects with numerous curbs or wall flashings can be significantly reduced.



TPO and PVC Universal Corners

Pre-molded Universal Corners require no stretching and are ideal for flashing both inside and outside corner details, saving up to 60% on labor compared to field fabrication.



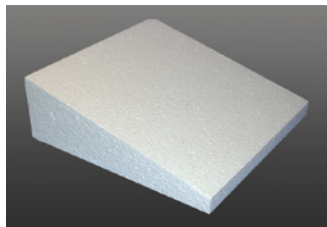
PVC Pressure-Sensitive (PS) Cover Strip

PVC PS Cover Strip is compatible with a variety of metal finishes and is quick and easy to install; no welding is required. Simply apply PVC Step 1 Activator, followed by PVC Step 2 Primer, then install the PVC PS Cover Strip.



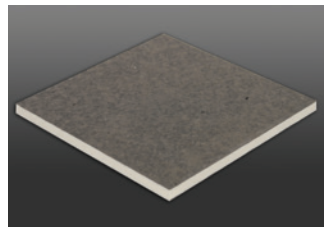
CAV-PRIME Primers

CAV-PRIME EPDM V-150 Primer, CAV-PRIME TPO Primer, and CAV-PRIME Low-VOC EPDM and TPO Primer
CAV-PRIME primers are packaged in a pressurized cylinder and are applied using a self-contained spray system providing a quick, one-person application. Application is made even faster and easier with the available spray gun, wand, applicator attachment kit, and backpack.



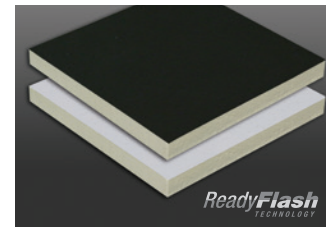
Insulfoam EPS Taper

Tapered engineered EPS insulation is available in virtually any slope, with panels up to 40" in a single layer. They can be combined with WeatherBond polyiso for tapered hybrid roof systems. Custom saddles and crickets are also available.



XP HD

XP HD is a paper-faced insulation cover board suitable for both re-roofing and new construction applications delivering an R-value of 2.5 and a compressive strength of 80 psi. XP HD was specifically designed for use as a cover board in mechanically attached systems and can save up to 10 cents a square foot.



XFP and XFP HD Cover Board with ReadyFlash Technology

ReadyFlash products feature a dark colored facer on one side and a light-colored facer on the other allowing contractors to manipulate adhesive flash-off times by choosing between two different-colored facers on every board. Utilizing the sun's energy, the dark facer accelerates adhesive flash-off while the light facer slows it down. The dark CGF also more closely matches the backside of single-ply membranes, providing better alignment of adhesive flash-off times between insulation and membrane.

Stay Connected

Get the most up-to-date information on all our labor saving products.



www.facebook.com/WeatherBondRoofing



[@WeatherBond](https://twitter.com/WeatherBond)

To learn more about how you can increase your productivity by taking advantage of labor-saving products from WeatherBond Roofing Systems, visit www.weatherbondroofing.com



WEATHERBOND
ROOFING SYSTEMS

Single-Ply Simplified

P.O. Box 251 | Plainfield, PA 17081 | 866.471.5125 | FAX: 717.960.4034 | www.weatherbondroofing.com

© 2021 WeatherBond. 03.29.21 WB-9845 - "Labor-Saving Products Quick Reference Guide"
WeatherBond is a trademark of WeatherBond. APEEL, HydroBond, and CAV-GRIP are trademarks of Carlisle Construction Materials, LLC.