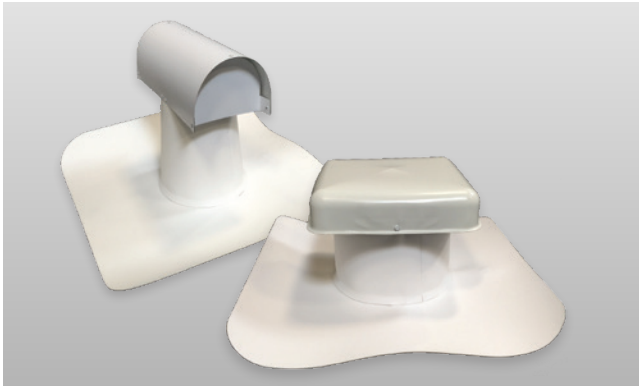


# WeatherBond

## TPO and PVC T-Top and Square Top Vents



### Overview

Available in TPO and PVC versions, WeatherBond's T-Top and Square Top Vents are designed to allow air to flow freely through the vent while preventing water from infiltrating the roofing system.

WeatherBond TPO T-Top and Square Top Vents are constructed using 60-mil (1.5 mm) TPO Detail Membrane, which provides enhanced flexibility and allows for the elimination of T-Joint Covers at three-way membrane intersections.

WeatherBond PVC T-Top and Square Top Vents are constructed using 60-mil (1.5 mm) KEE HP Membrane, which provides excellent long-term weathering protection.

TPO and PVC T-Top Vents are white in color and are manufactured in standard sizes of 4", 6", and 8". Additional sizes and colors are available on a special-order basis.

TPO and PVC Square Top Vents are white in color and are available in a nominal size of 8". Additional colors are offered on a special-order basis. Custom sizes of Square Top Vents are not available.

WeatherBond's TPO and PVC T-Top and Square Top Vents are part of the Certified Fabricated Accessory (CFA) program. CFAs are the only factory-fabricated TPO and PVC accessories that meet the stringent quality tolerances to be included in a WeatherBond roofing system.

### Features and Benefits

- Provides a substantial labor savings compared to field-fabrication
- Flexible TPO Detail Membrane allows for the elimination of T-Joint Covers at three-way membrane intersections
- Provides a more consistent, professional appearance than field-fabrication

### Installation

1. After cutting the appropriate-sized hole through the membrane and substrate, secure the vent sub-base to the deck with proper fasteners.
2. Heat-weld the TPO or PVC base flange to the deck membrane.
3. Once the weld area is completely cool, check all splices for voids and cold-welds with a seam probe. Make any needed repairs.
4. For TPO applications, apply TPO Cut-Edge Sealant to all edges of the vent flanges that are located on the deck.

REVIEW CURRENT WEATHERBOND INSTALLATION INSTRUCTIONS FOR SPECIFIC INSTALLATION REQUIREMENTS.



**WEATHERBOND**  
ROOFING SYSTEMS

Single-Ply Simplified

## T-Top Vents Typical Properties and Characteristics

Physical Property	4" TPO	6" TPO	8" TPO	4" PVC	6" PVC	8" PVC
Product Codes	326869	326882	326883	326868	326880	326881
Weight Per Item	4.1 lbs.	4.9 lbs.	6.1 lbs.	4.1 lbs.	4.9 lbs.	6.1 lbs.
Packaging	1 per box	1 per box	1 per box	1 per box	1 per box	1 per box
Diameter (Actual)	Top: 4.5" Bottom: 6.25"	Top: 6.5" Bottom: 8.25"	Top: 8.5" Bottom: 10.25"	Top: 4.5" Bottom: 6.25"	Top: 6.5" Bottom: 8.25"	Top: 8.5" Bottom: 10.25"
Base Size	Sub-base: 12" x 12" Boot: 18" x 18"	Sub-base: 12" x 12" Boot: 20" x 20"	Sub-base: 15" x 15" Boot: 22" x 22"	Sub-base: 12" x 12" Boot: 18" x 18"	Sub-base: 12" x 12" Boot: 20" x 20"	Sub-base: 15" x 15" Boot: 22" x 22"
Overall Height	10.5"	11.5"	12.5"	10.5"	11.5"	12.5"

Sub-base material: 26 Ga. Galv with .060 Weldable Membrane Flange  
Hood material: 26 Ga. Painted steel with Kynar coating

## Square Top Vent Typical Properties and Characteristics

Physical Property	8" TPO	8" PVC
Product Codes	326867	326866
Weight Per Item	3 lbs.	3 lbs.
Packaging	1 per box	1 per box
Height	Riser: 6.375" Overall: 7.5"	Riser: 6.375" Overall: 7.5"
Width	Hood: 10.25" Vent: 7.625"	Hood: 10.25" Vent: 7.625"
Base Size	Sub-base: 14" x 14" Boot: 20" x 20"	Sub-base: 14" x 14" Boot: 20" x 20"

Sub-base material: 26 Ga. Galv with .060 Weldable Membrane Flange  
Hood material: 26 Ga. Painted steel

## Net Free Area (Sq. In.)

	NFA	NFA w/ 1/8" Screen
8" Square Top	50	38
4" T-Top	14	11
6" T-Top	31	23
8" T-Top	53	40

## LEED® Information

Pre-consumer Recycled Content	0%
Post-consumer Recycled Content	0%
Manufacturing Locations	Mount Prospect, IL Piedmont, SC Woodland, WA
Solar Reflectance Index (SRI)	White: 99



**WEATHERBOND**  
ROOFING SYSTEMS

Single-Ply Simplified

P.O. Box 251 | Plainfield, PA 17081 | 866.471.5125 | FAX: 717.960.4034 | [www.weatherbondroofing.com](http://www.weatherbondroofing.com)

© 2023 WeatherBond. 08.29.23 WB-9997 - "TPO and PVC T-Top and Square Top Vents Technical Data Bulletin"  
WeatherBond is a trademark of WeatherBond. LEED is a registered trademark of the U.S. Green Building Council.