

To: WeatherBond Roofing Systems' Contractors

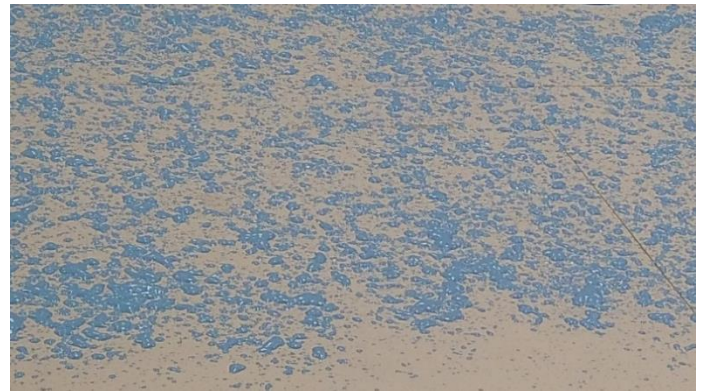
WeatherBond Roofing Systems is pleased to announce that Flexible DASH 50-gallon drums, 15-gallon drums, and 5-gallon jugs can now be used for splatter application. Splatter application is approved for both membrane and insulation attachment when Flexible DASH is applied using WeatherBond-approved dispensing equipment.

Flexible DASH splatter application provides the following benefits:

- Consistent application – Removes the guesswork of ensuring the proper spacing of 4", 6", or 12" on-center beads while providing a consistent 50% coverage of the substrate.
- Improved aesthetics – Provides an even coat of adhesive on the substrate, eliminating the telegraphing that can occur with bead applications.



Bead Application



Splatter Application

- Improved performance – Provides exceptional uplift performance, achieving ratings up to an FM 1-915.
- Speed of application – Improves installation time by up to 30% when compared to 6" on-center bead applications.
- Improved coverage rates – Applied at ½ gallon per square, providing contractors with a cost-competitive application.
- Approved for a variety of substrates – Splatter application has been tested over a variety of substrates. For a list of approved substrates, please review the Flexible DASH TDB or the Flexible DASH Adhesive guide.
- Wide range of equipment options – Approved dispensing equipment for Flexible DASH splatter applications includes the Patriot Jr. or P55 with the VEE Air Gun, the HULK Rig with the HULK Air Gun, or WeatherBond's Flexible DASH Dual Tanks.



WEATHERBOND
ROOFING SYSTEMS

P.O. Box 251 | Plainfield, PA 17081 | 866.471.5125 | FAX: 717.960.4034 | www.weatherbondroofing.com

Flexible DASH Coverage Rates					
Package Type	Full Spray (ft ²)	Splatter (ft ²)	4" o.c. (ft ²)	6" o.c. (ft ²)	12" o.c. (ft ²)
Dual Cartridge	N/A	N/A	100-200	200-300	400-600
Dual Tanks	N/A	2,000-2,200*	1,000-1,200	1,500-1,700	3,000-3,200
5-Gallon Jugs	1,000	1,800-2,000	670-900	1,000-1,250	2,000-2,500
15-Gallon Drums	1,800-3,000	5,400-6,000	2,110-2,700	3,000-3,750	6,000-7,500
50-Gallon Drums	5,000-10,000	18,000-20,000	6,700-9,000	10,000-12,500	20,000-25,000

*Dual Tank splatter approved for membrane attachment to smooth flat surfaces only.

For equipment requirements, application procedures, and a list of approved splatter application equipment, please reference the Flexible DASH Adhesive guide.

Sincerely,



Austin Kulp
Fleece Product Manager



WEATHERBOND
ROOFING SYSTEMS

P.O. Box 251 | Plainfield, PA 17081 | 866.471.5125 | FAX: 717.960.4034 | www.weatherbondroofing.com

Single-Ply Simplified