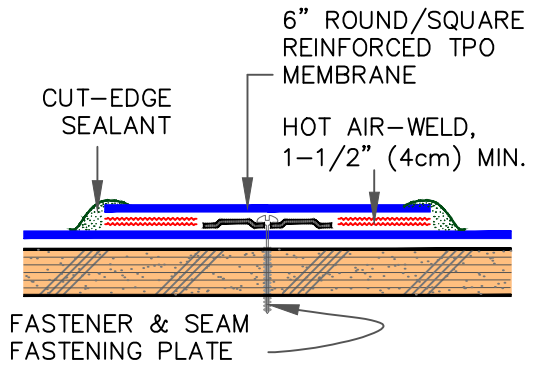


NOTES:

1. CUT SQUARE PIECE, TRIM ROUNDED EDGES, DRAW CENTER LINES AND CUT A 5-1/2" (14cm) DIAMETER HOLE AT THE CENTER OF PIECE. SLIDE THE PIECE THROUGH THE VENT.
2. ONE VENT PER 2,000 S.F. PROPERLY SPACED. MIN. 2 VENTS IF ROOF IS <2,000 S.F., AND INSTALL AT OPPOSITE CORNERS WITHIN 8'X8' CORNER AREA.
3. AVOID VENTS IN VALLEYS/LOWS/TRAFFIC AREAS OR NEAR THE ROOF EDGES AND PARAPET WALLS. POSITION VENTS AT LEAST 7'-0" FROM ROOF EDGE.
4. INSTALL MIN. 4 FASTENERS AT 4 CORNERS @ 12" FROM THE OUTER EDGE OF VENT. SEE [DETAIL A](#).



DETAIL A: REQUIRED FASTENING AROUND EACH VENT FOR MF ASSEMBLY



MOISTURE RELIEF VENT FOR MF SYSTEM

WEATHERBOND THERMOPLASTIC REINFORCED MEMBRANE

0 - SEE NOTE

THERMOPLASTIC ROOFING SYSTEM

WBPC-9.1